

BEYOND SWIPING RIGHT

MAKING MATCHES THAT LAST
FROM DESIGN TO MANUFACTURING



Ilka Cassidy, CPHC
Holzraum System
C2 Architecture
Passive House Accelerator



Shannon Pendleton, CPHC
Sanderson Sustainable Design
Passive House Accelerator
Source 2050



Steve Hessler, CPHC
Holzraum System

BEYOND SWIPING RIGHT | MAKING MATCHES THAT LAST

INTRODUCTION | SCHEMATIC-DATING | DEVELOPMENT-PRENUP | DOCUMENTATION-TYING THE KNOT | QUESTIONS



ARE YOU A CANDI'DATE' FOR PREFAB? | HOW DO YOU KNOW?

INTRODUCTION | SCHEMATIC-DATING | DEVELOPMENT-PRENUP | DOCUMENTATION-TYING THE KNOT | QUESTIONS



<https://filminvestigate.blog/2019/03/06/dating-game-do-they-work-could-they-work/>

WHAT'S ATTRACTIVE ? | FIRST IMPRESSIONS

INTRODUCTION | SCHEMATIC-DATING | DEVELOPMENT-PRENUP | DOCUMENTATION-TYING THE KNOT | QUESTIONS



[/www.pnnews.com/news-releases/new-social-first-dating-app-launches-for-gay-bisexual-and-queer-men-301838648.html](https://www.pnnews.com/news-releases/new-social-first-dating-app-launches-for-gay-bisexual-and-queer-men-301838648.html)

<https://www.digitaltrends.com/mobile/best-dating-apps/>

WHAT'S ATTRACTIVE ? | LET'S PLAY THE PHIELD

INTRODUCTION | SCHEMATIC-DATING | DEVELOPMENT-PRENUP | DOCUMENTATION-TYING THE KNOT | QUESTIONS



<https://www.netflix.com/title/80996601>



<https://www.digitaltrends.com/mobile/best-dating-apps/>



<https://www.someecards.com/usercards/viewcard/MjAxMi1hZDdkN2FIZTYyNzFkNjNi/>

PROJECT DEVELOPMENT | YOUR PROFILE MAKEOVER



INTRODUCTION | SCHEMATIC-DATING | DEVELOPMENT-PRENUP | DOCUMENTATION-TYING THE KNOT | QUESTIONS



LOCATION



CLIMATE?
DELIVERY RADIUS?
INSTALL RADIUS?
LOCAL LABOR?
DELIVERY?
BARRIERS TO ENTRY?

MATERIALS



PH WINDOWS?
HEALTHY / EPDs?
FSC LUMBER?
VAPOR OPEN AVB/R?
SMART AIR BARRIERS?
CARBON CREDITS?
LOCALLY SOURCED?

SERVICES



INTEGRATED MODELING?
IN-HOUSE ENGINEERING?
AIRTIGHT CONSTRUCTION?
PRE-INSTALLED WINDOWS?
ON-SITE INSTALL?
ON-SITE TRAINING?
ALL ELECTRIC FACILITY?

SCHEDULE



CONTRACT PRICING?
DESIGN FREEZE DATE?
WINDOW ORDER DATE?
DELIVERY DATES?
PROJECT CLOSEOUT?
WARRANTIES?
PENALTIES FOR DELAYS?

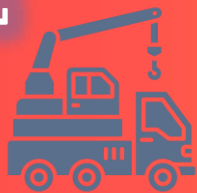
PROJECT DEVELOPMENT | FRONTLOADING LOCATION



INTRODUCTION | SCHEMATIC-DATING | DEVELOPMENT-PRENUP | DOCUMENTATION-TYING THE KNOT | QUESTIONS



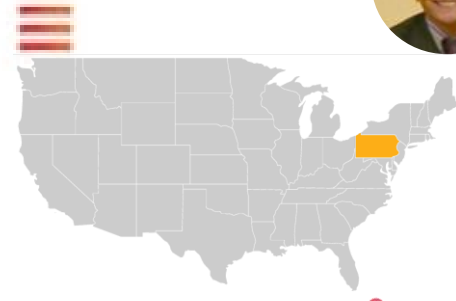
LOCATION



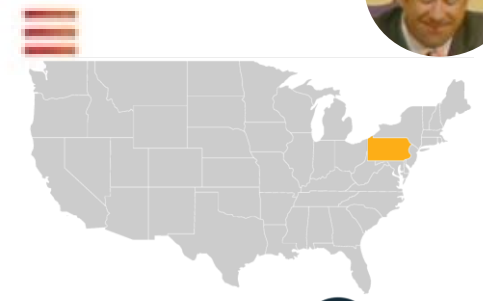
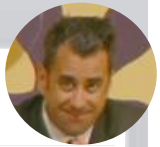
CLIMATE ?
DELIVERY RADIUS ?
INSTALL RADIUS ?
LOCAL MATERIALS / LABOR ?
BARRIER FREE ENTRY ?



CLIMATE *
DELIVERY RADIUS *
INSTALL RADIUS *
LOCAL MATERIALS / LABOR *
BARRIER FREE ENTRY *



CLIMATE *
DELIVERY RADIUS *
INSTALL RADIUS *
LOCAL MATERIALS / LABOR *
BARRIER FREE ENTRY *



CLIMATE *
DELIVERY RADIUS *
INSTALL RADIUS *
LOCAL MATERIALS / LABOR *
BARRIER FREE ENTRY *

PROJECT DEVELOPMENT | FRONTLOADING MATERIALS



INTRODUCTION | SCHEMATIC-DATING | DEVELOPMENT-PRENUP | DOCUMENTATION-TYING THE KNOT | QUESTIONS

MATERIALS

Red List Free

PH WINDOWS ?
HEALTHY / EPDs ?
FSC LUMBER ?
FOAM FREE OPTIONS?
SMART AIR BARRIERS ?
CARBON CREDITS ?
LOCALLY SOURCED ?

Red List Free

PH WINDOWS *
HEALTHY / EPDs *
FSC LUMBER *
FOAM FREE OPTIONS *
SMART AIR BARRIERS *
CARBON CREDITS *
LOCALLY SOURCED

Red List Free

PH WINDOWS *
HEALTHY / EPDs *
FSC LUMBER *
FOAM FREE OPTIONS *
SMART AIR BARRIERS *
CARBON CREDITS *
LOCALLY SOURCED *

Red List Free

PH WINDOWS *
HEALTHY / EPDs *
FSC LUMBER *
FOAM FREE OPTIONS *
SMART AIR BARRIERS *
CARBON CREDITS *
LOCALLY SOURCED *

https://www.freepik.com/vectors/tinder



SERVICES



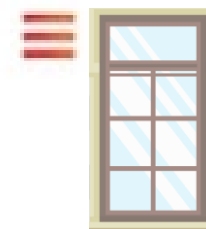
INTEGRATED MODELING?
IN-HOUSE ENGINEERING?
AIRTIGHT CONSTRUCTION?
PRE-INSTALLED WINDOWS?
ON-SITE INSTALL?
ON-SITE TRAINING?
ALL ELECTRIC FACILITY?



INTEGRATED MODELING *
IN-HOUSE ENGINEERING *
AIRTIGHT CONSTRUCTION *
PRE-INSTALLED WINDOWS *
ON-SITE INSTALL *
ON-SITE TRAINING *
ALL ELECTRIC FACILITY *



INTEGRATED MODELING *
IN-HOUSE ENGINEERING *
AIRTIGHT CONSTRUCTION *
PRE-INSTALLED WINDOWS *
ON-SITE INSTALL *
ON-SITE TRAINING *
ALL ELECTRIC FACILITY *



INTEGRATED MODELING *
IN-HOUSE ENGINEERING *
AIRTIGHT CONSTRUCTION *
PRE-INSTALLED WINDOWS *
ON-SITE INSTALL *
ON-SITE TRAINING *
ALL ELECTRIC FACILITY *



SCHEDULE



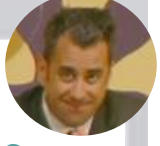
CONTRACT PRICING?
DESIGN FREEZE DATE?
WINDOW ORDER DATE?
DELIVERY DATES?
PROJECT CLOSEOUT?
WARRANTIES?
PENALTIES FOR DELAYS?



CONTRACT PRICING *
DESIGN FREEZE DATE
WINDOW ORDER DATE
DELIVERY DATES
PROJECT CLOSEOUT *
WARRANTIES *
PENALTIES FOR DELAYS *



CONTRACT PRICING *
DESIGN FREEZE DATE *
WINDOW ORDER DATE *
DELIVERY DATES
PROJECT CLOSEOUT *
WARRANTIES
PENALTIES FOR DELAYS *

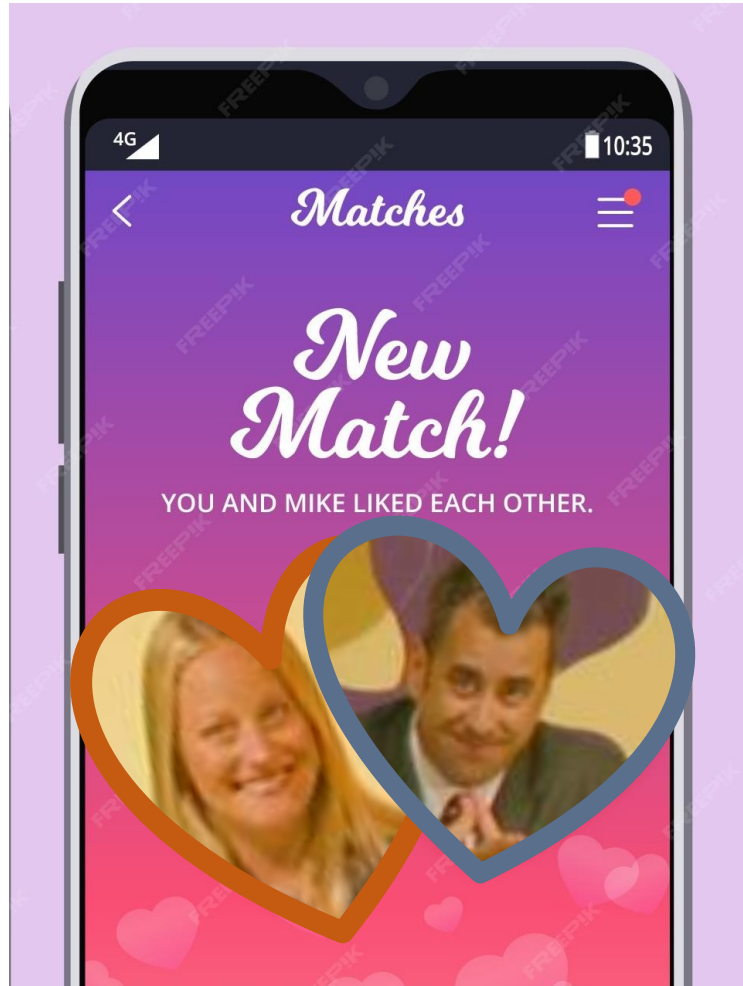


CONTRACT PRICING *
DESIGN FREEZE DATE *
WINDOW ORDER DATE *
DELIVERY DATES
PROJECT CLOSEOUT *
WARRANTIES *
PENALTIES FOR DELAYS *

EARLY DESIGN | YOU HAVE A MATCH!



INTRODUCTION | SCHEMATIC-DATING | DEVELOPMENT-PRENUP | DOCUMENTATION-TYING THE KNOT | QUESTIONS



- CLIMATE *
- DELIVERY RADIUS *
- INSTALL RADIUS *
- LOCAL MATERIALS / LABOR *
- DELIVERY *
- BARRIER FREE ENTRY *

LOCATION

- PH WINDOWS *
- HEALTHY / EPDs
- FSC LUMBER *
- FOAM FREE OPTIONS *
- SMART AIR BARRIERS *
- CARBON CREDITS
- LOCALLY SOURCED *

MATERIALS

- INTEGRATED MODELING
- IN-HOUSE ENGINEERING
- AIRTIGHT CONSTRUCTION *
- PRE-INSTALLED WINDOWS *
- ON-SITE INSTALL *
- ON-SITE TRAINING *
- ALL ELECTRIC FACILITY *

SERVICES

- CONTRACT PRICING *
- DESIGN FREEZE DATE *
- WINDOW ORDER DATE *
- DELIVERY DATES
- PROJECT CLOSEOUT *
- WARRANTIES *
- PENALTIES FOR DELAYS *

SCHEDULE

WE ARE GETTING SERIOUS | SETTING EXPECTATIONS



INTRODUCTION | SCHEMATIC-DATING | **DEVELOPMENT-PRENUP** | DOCUMENTATION-TYING THE KNOT | QUESTIONS



WE ARE GETTING SERIOUS | SETTING EXPECTATIONS



INTRODUCTION | SCHEMATIC-DATING | **DEVELOPMENT-PRENUP** | DOCUMENTATION-TYING THE KNOT | QUESTIONS



SETTING EXPECTATIONS | PRODUCT

INTRODUCTION | SCHEMATIC-DATING | **DEVELOPMENT-PRENUP** | DOCUMENTATION-TYING THE KNOT | QUESTIONS

IT'S GOING TO BE A HIGH QUALITY, HIGH PERFORMING BUILDING
AND WE'LL GENERATE LESS WASTE THAN WITH A SITE BUILT
PROJECT



SETTING EXPECTATIONS | PRODUCT

INTRODUCTION | SCHEMATIC-DATING | **DEVELOPMENT-PRENUP** | DOCUMENTATION-TYING THE KNOT | QUESTIONS

THE ARCHITECT UNDERSTANDS OUR ASSEMBLIES AND
INCORPORATES THEM INTO THE DRAWING SET



SETTING EXPECTATIONS | COST

INTRODUCTION | SCHEMATIC-DATING | **DEVELOPMENT-PRENUP** | DOCUMENTATION-TYING THE KNOT | QUESTIONS

PREFAB IS GOING TO BE SO MUCH CHEAPER THAN SITE BUILT
AND ALL COSTS ARE INCLUDED



SETTING EXPECTATIONS | COST

INTRODUCTION | SCHEMATIC-DATING | DEVELOPMENT-PRENUP | DOCUMENTATION-TYING THE KNOT | QUESTIONS

- BETTER QUALITY FOR COMPARABLE COST
- LESS CHANGE ORDERS
- THE COST IS PREDICTABLE



SETTING EXPECTATIONS | SCOPE

INTRODUCTION | SCHEMATIC-DATING | **DEVELOPMENT-PRENUP** | DOCUMENTATION-TYING THE KNOT | QUESTIONS

THE BUILDER HAS THE SITE READY FOR US. THE SCOPE DIVISION
IS CLEAR



SCOPE DEFINITION | WHAT IS INCLUDED IN THE CONTRACT?

INTRODUCTION | SCHEMATIC-DATING | DEVELOPMENT-PREUP | DOCUMENTATION-TYING THE KNOT | QUESTIONS

FACTORY SCOPE



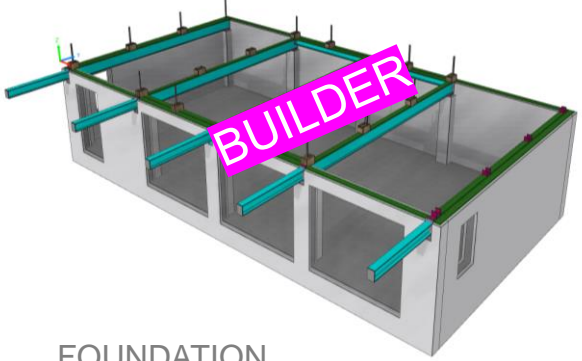
- PRODUCTION MODEL | LOD400
- SHOP DRAWINGS
- PANEL PRODUCTION
- PANEL DELIVERY
- PRE-MEP BLOWER DOOR TEST

- (- PANEL AND CONNECTION ENGINEERING)
- (- PANEL INSTALL)
- (- WINDOW INSTALL)

TYPICALLY NOT IN FACTORY SCOPE

- BUILDING PERMIT (LOCAL ARCHITECT)
- ENGINEER OF RECORD
- SITE PREPARATION (LOCAL BUILDER)
- CONSTRUCTION MANAGEMENT
- FINISHES
- ENERGY MODELING (CPHC)
- SYSTEM DESIGN
- FINAL BLOWER DOOR TEST

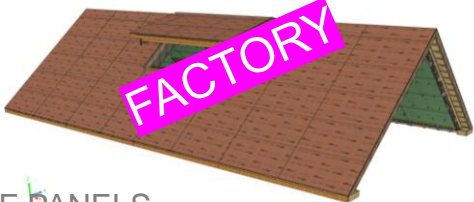
SCOPE DEFINITION | WHAT IS INCLUDED IN THE CONTRACT?



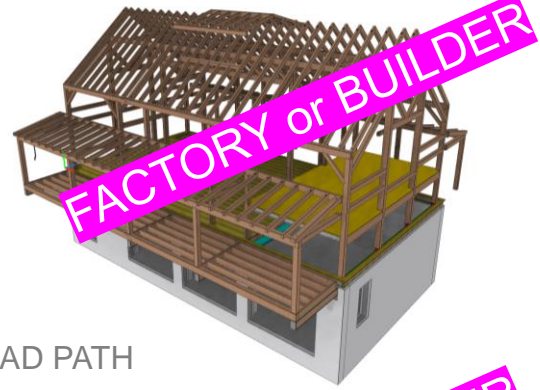
FOUNDATION



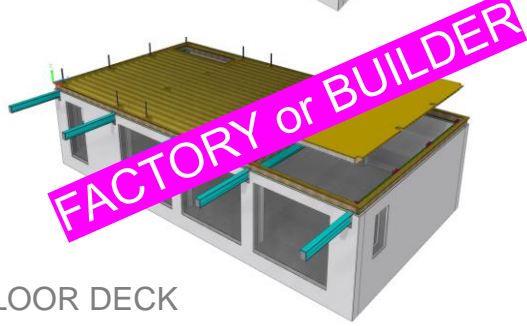
MEMBRANE LEADERS



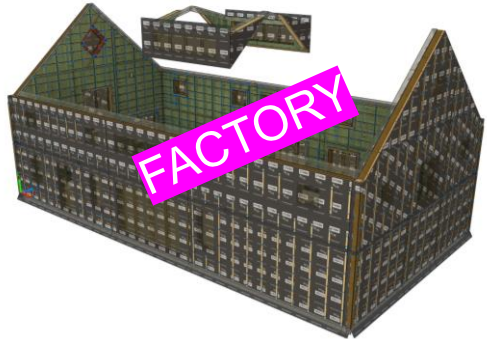
ROOF PANELS



LOAD PATH



FLOOR DECK



WALL PANELS

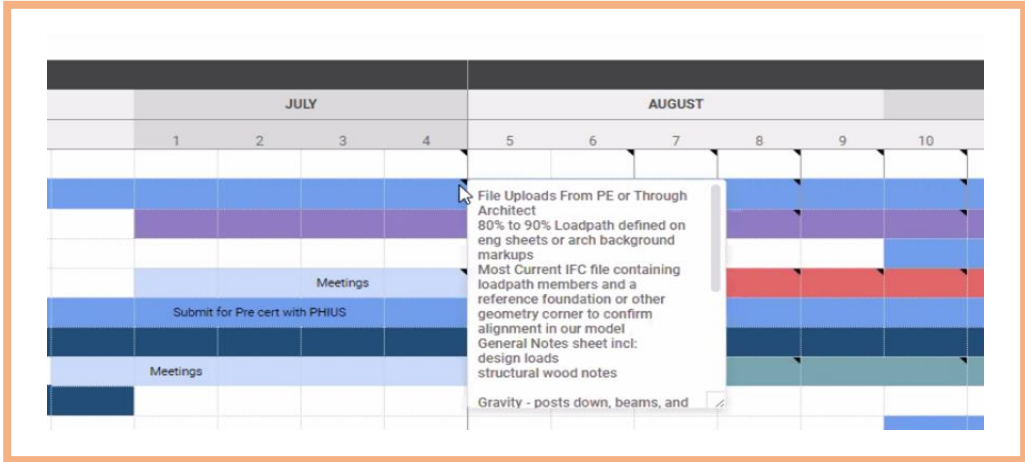
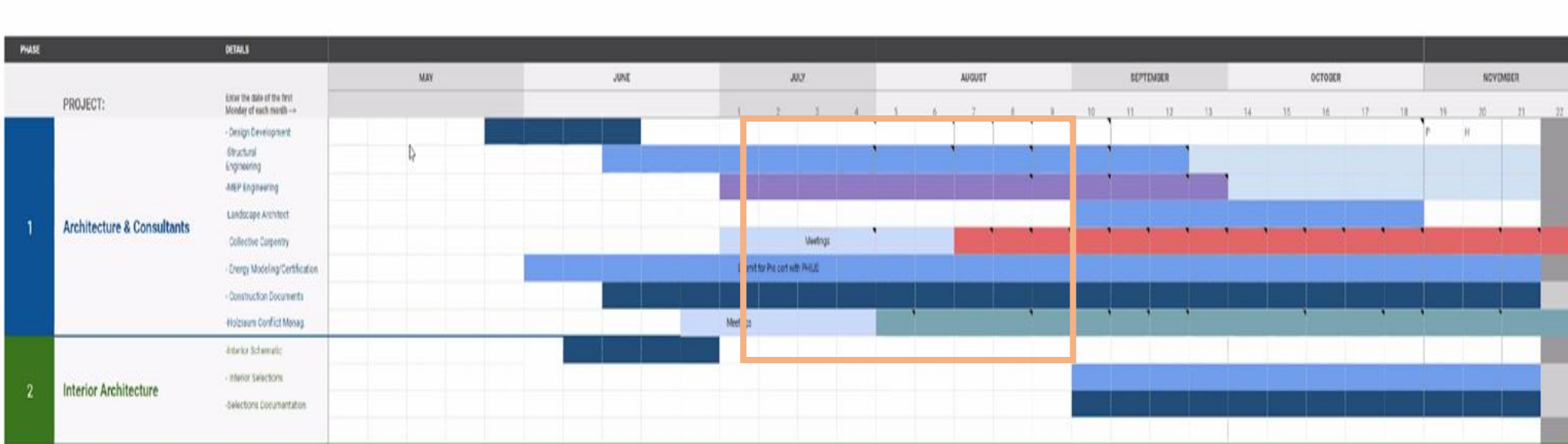
SETTING EXPECTATIONS | SCHEDULE

THE PROJECT IS GOING TO BE BUILT SO MUCH FASTER



SCHEDULE | ALIGNING TO FACTORY MILESTONES AND DELIVERABLES

INTRODUCTION | SCHEMATIC-DATING | DEVELOPMENT-PRENUP | DOCUMENTATION-TYING THE KNOT | QUESTIONS



SETTING EXPECTATIONS | DESIGN & DOCUMENTATION

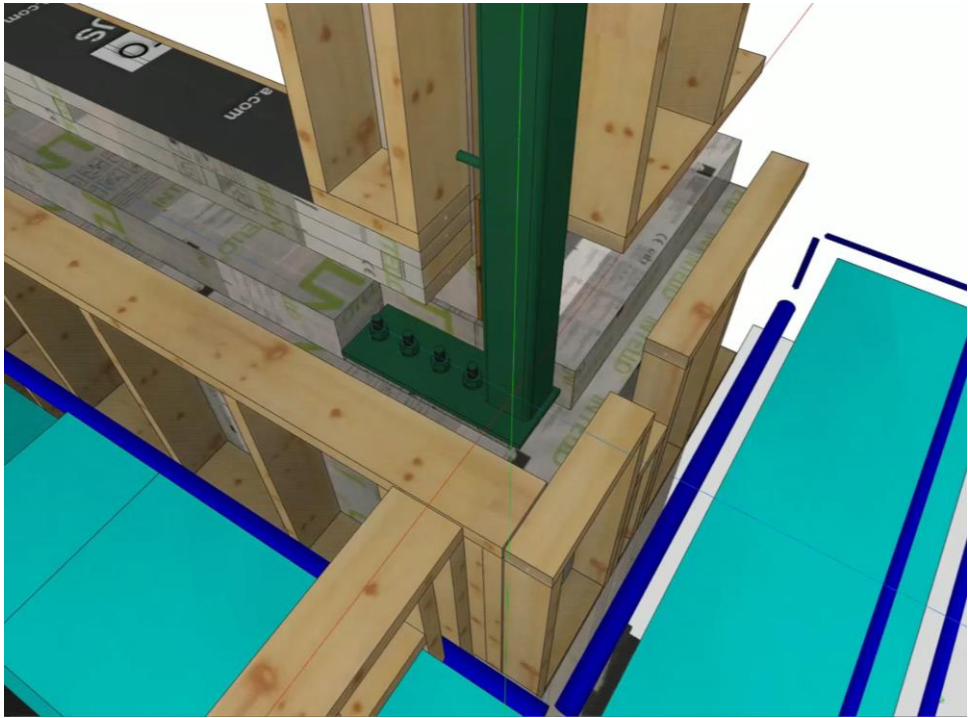
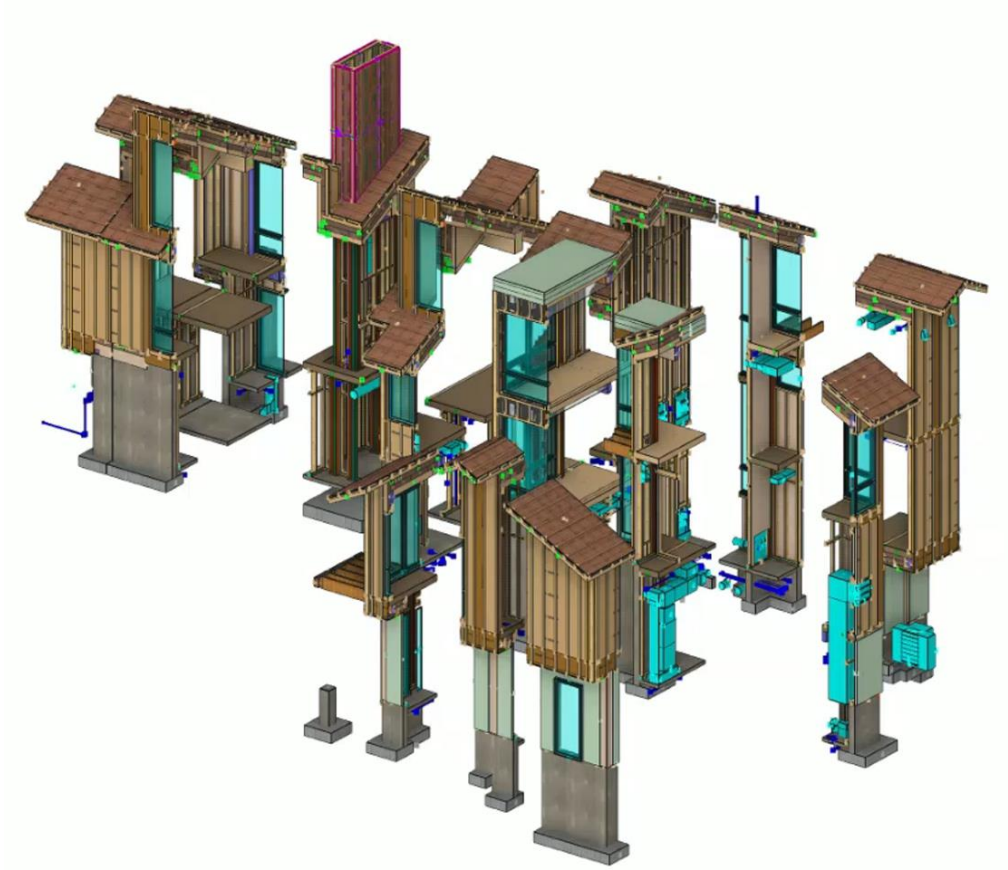
INTRODUCTION | SCHEMATIC-DATING | **DEVELOPMENT-PRENUP** | DOCUMENTATION-TYING THE KNOT | QUESTIONS

I'M SUPPOSED TO HAVE MY GEOMETRY FROZEN BUT IT'S NOT A
BIG DEAL, I CAN STILL MAKE CHANGES



SETTING EXPECTATIONS | DESIGN & DOCUMENTATION

INTRODUCTION | SCHEMATIC-DATING | DEVELOPMENT-PRENUP | DOCUMENTATION-TYING THE KNOT | QUESTIONS



SETTING EXPECTATIONS | DESIGN & DOCUMENTATION

INTRODUCTION | SCHEMATIC-DATING | DEVELOPMENT-PREUP | DOCUMENTATION-TYING THE KNOT | QUESTIONS

MY DESIGN INTENT IS CLEAR – I CAN LEAN BACK AND LET THE
FACTORY TAKE IT FROM HERE



SETTING EXPECTATIONS | DESIGN & DOCUMENTATION

INTRODUCTION | SCHEMATIC-DATING | DEVELOPMENT-PRENUP | DOCUMENTATION-TYING THE KNOT | QUESTIONS

THE ARCHITECT / BUILDER TEAM IS EXPERIENCED. THE
DRAWINGS SHOW ALL THE INFORMATION WE NEED FOR
PRODUCTION



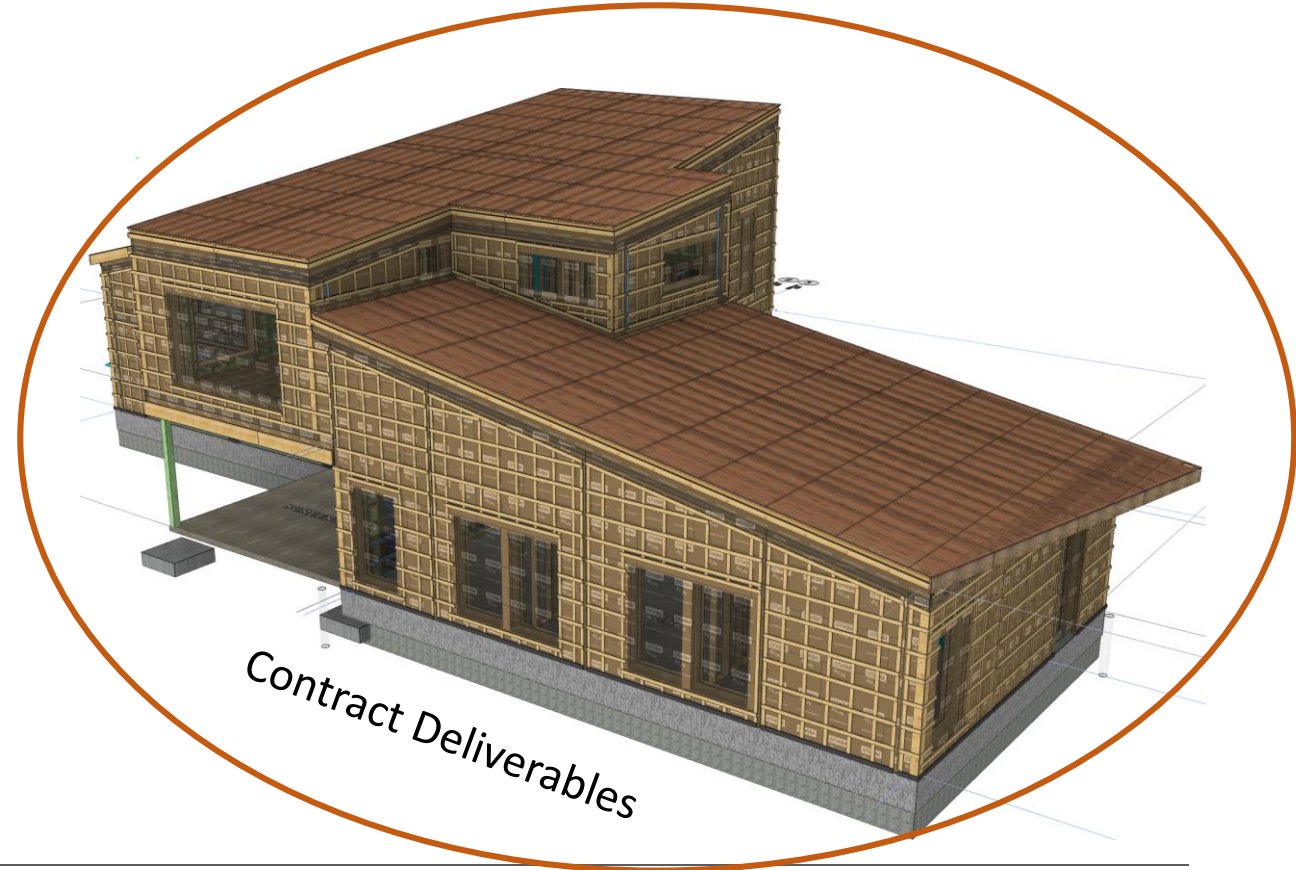
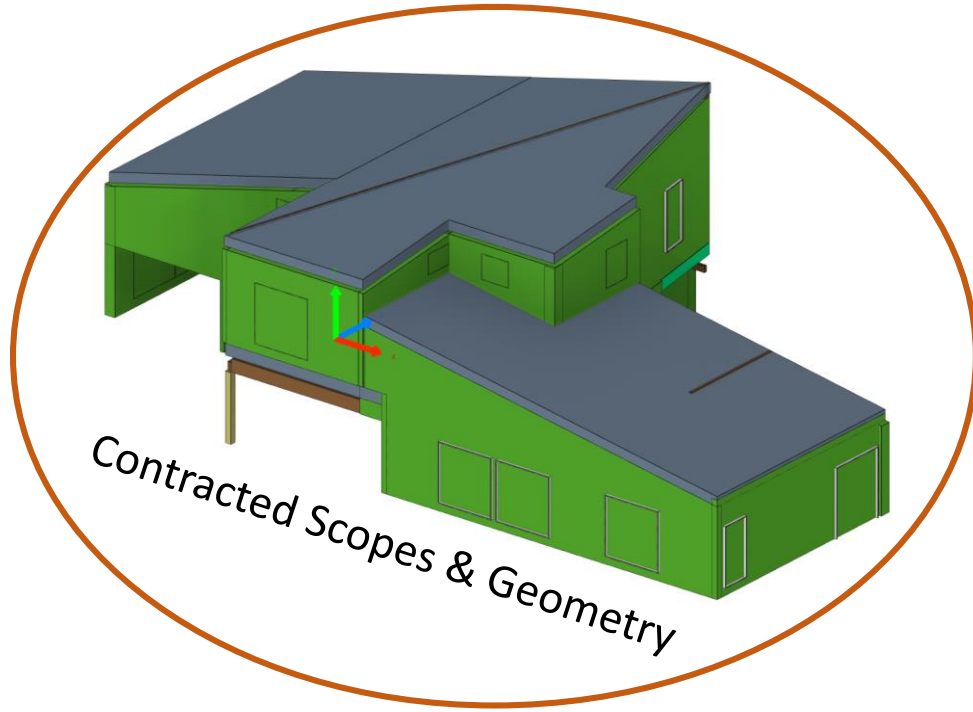
DRAWING CHECKLIST & EVALUATION

- ARCHITECTURALS | WINDOW SCHEDULE
- 2D CAD: PLANS, ELEVATIONS, SECTIONS
- 3D MODEL: IFC, SAT, SKETCHUP, VECTORWORKS, REVIT,..

- COLLABORATOR 2D/ 3D CONTENT
- STRUCTURAL ENGINEERING
- MEP
 - (- STRUCTURAL STEEL)
 - (- STAIR FABRICATOR)

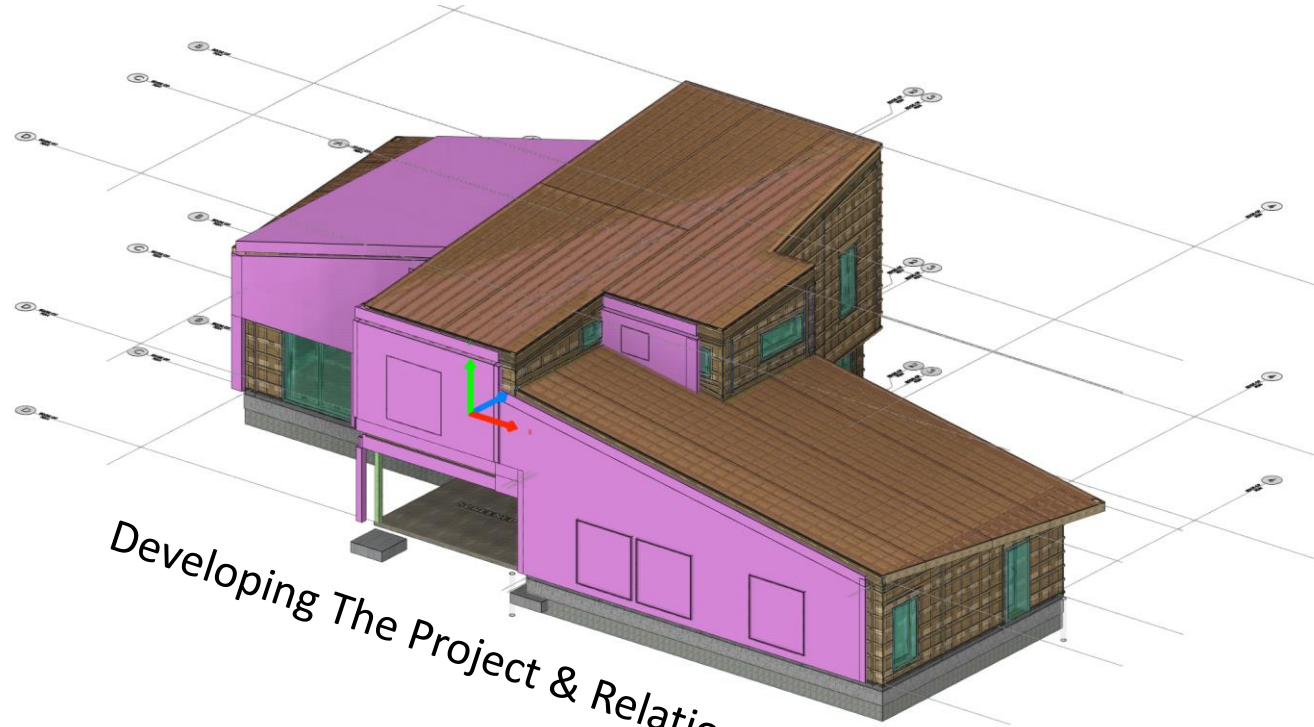
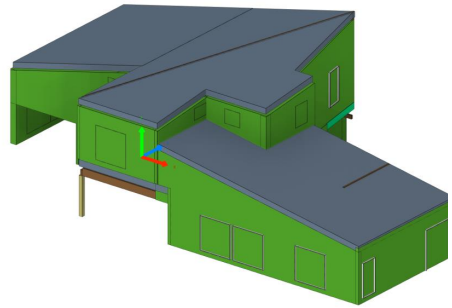
GOAL | FROM CONTRACT TO CONTRACT DELIVERABLE

INTRODUCTION | SCHEMATIC-DATING | DEVELOPMENT-PRENUP | DOCUMENTATION-TYING THE KNOT | QUESTIONS

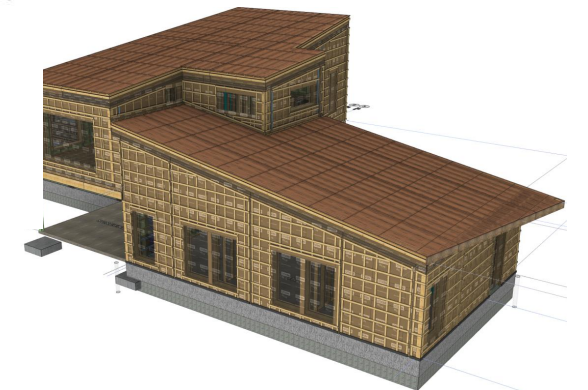


GOAL | A SUCCESSFUL RELATIONSHIP

INTRODUCTION | SCHEMATIC-DATING | DEVELOPMENT-PRENUP | DOCUMENTATION-TYING THE KNOT | QUESTIONS



Developing The Project & Relationship.



GOAL | A SUCCESSFUL RELATIONSHIP

INTRODUCTION | SCHEMATIC-DATING | DEVELOPMENT-PRENUP | DOCUMENTATION-TYING THE KNOT | QUESTIONS

MORAL OF THE STORY: COLLABORATIVE AND ITERATIVE
RELATIONSHIP BETWEEN ARCHITECT/CLIENT AND BUILD/MANUFACTURER TEAM.

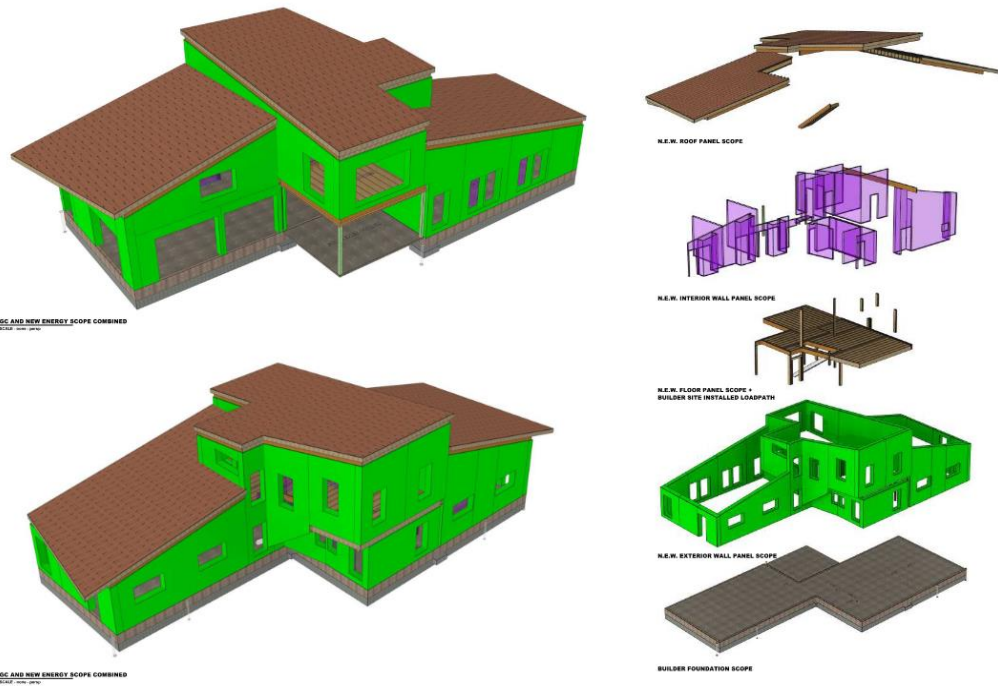


BEYOND SWIPING RIGHT | FROM DESIGN INTENT TO PRODUCTION FIDELITY

INTRODUCTION | SCHEMATIC-DATING | DEVELOPMENT-PRENUP | DOCUMENTATION-TYING THE KNOT | QUESTIONS

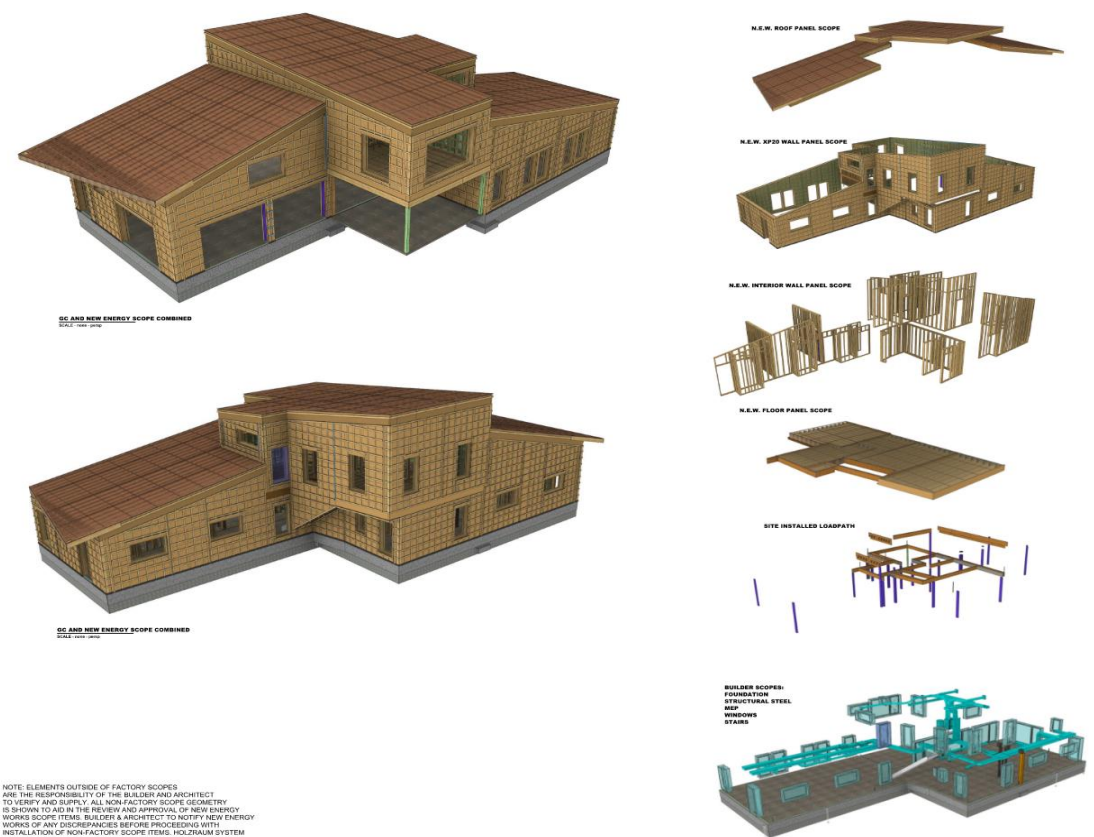
GR1

Geometry Review One = LOD 200



GR2

Geometry Review Two - LOD 350/400

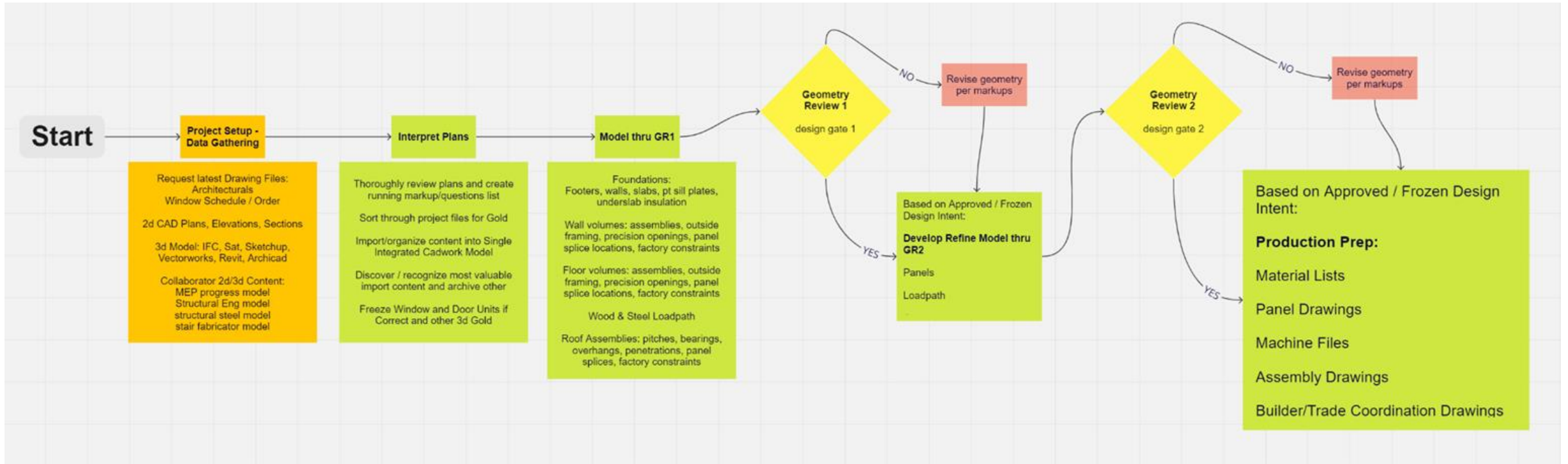


NOTE: ELEMENTS OUTSIDE OF FACTORY SCOPES ARE THE RESPONSIBILITY OF THE BUILDER AND ARCHITECT TO VERIFY AND SUPPLY ALL NONFACTORY SCOPE GEOMETRY TO KEEP TO AND IN THE REVIEW AND APPROVAL OF NEW ENERGY WORKS SCOPE ITEMS. BUILDER ARCHITECT TO NOTIFY NEW ENERGY WORKS OF ANY DISCREPANCIES BEFORE PROCEEDING WITH INSTALLATION OF NONFACTORY SCOPE ITEMS. HOLDHAM SYSTEM BEARS NO RESPONSIBILITY FOR SUCH DISCREPANCIES.

BEYOND SWIPING RIGHT | DFMA - OVERALL PROCESS

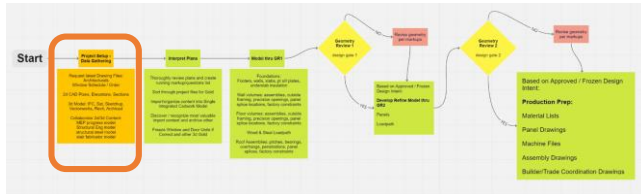
INTRODUCTION | SCHEMATIC-DATING | DEVELOPMENT-PRENUP | DOCUMENTATION-TYING THE KNOT | QUESTIONS

DFMA - DESIGN FOR MANUFACTURING ASSEMBLY



BEYOND SWIPING RIGHT | DFMA – DATA GATHERING

INTRODUCTION | SCHEMATIC-DATING | DEVELOPMENT-PREUP | DOCUMENTATION-TYING THE KNOT | QUESTIONS



Project Setup - Data Gathering

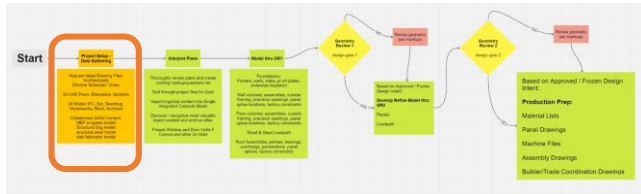
Request latest Drawing Files:
 Architecturals
 Window Schedule / Order
 2d CAD Plans, Elevations, Sections
 3d Model: IFC, Sat, Sketchup,
 Vectorworks, Revit, Archicad
 Collaborator 2d/3d Content:
 MEP progress model
 Structural Eng model
 structural steel model
 stair fabricator model

Checklist

- latest arch set pdf
- latest 2d cad - all level plans, critical building sections, annotated wall, floor, roof [] section details, elevations
- latest struct set pdf
- latest struct set 2d cad
- Can we have the structural engineer's grid lines incorporated into the arch set and receive the first floor plan with grid as 2d cad?
- Latest MEP IFC or sat
- latest Arch IFC & sat export from Most Current VW Arch Model
- Window & Exterior door to Wall Install Details - all or most conditions - (pls review Holzraum standard window install detail which could be revised to accommodate BPrice design intent) <https://catch.holzraumsystem.com/#/issues/1127>
- All Wall assembly details / buildups - Holzraum will develop in model and geom set - 2x10 studs
- All Floor assembly details / buildups (sleeper depths, mech chase requirements, service cavity, insulation, finish ceiling mounting requirements, lighting mounting and depth requirements, etc)
- All Sloped Roof assembly details / buildups - Holzraum will develop in model and geom set
- 2x3 flat service cavity on ceiling of xp20 roof panels
- Exterior Wall Facades and required batten coursing and spacing - 2 layers of 1x3 battens required - Holzraum to show examples of standard batten holdbacks
- Specific facade nailer requirements at windows, doors, corners and cantilever transitions
- size / location of erv supply/extraction ducts at ext wall
- list and location of all ext wall and roof penetrations including diameter accommodation for insulation and clearance
- stub up locations plumbing and conduit in slab (for coordination - not panel scope)
- Foundation to 1st Fl wall and Floor framing details - all conditions, steps, stems, insulation
- Rough openings for Stairs (accommodating defined well finishes)
- Frozen interior & exterior lighting plan, schedule, specs and callouts for non-typical lighting to framing accommodation needs
- All Lighting fixture types have strategies for framing accommodation and wire runs?
- location/method for guttering/down-spouting
- location and vertical position of hose-bibs relative to t.o. finish slab
- Toilets (floor or wall hung?) locations
- Sub Slab insulation requirements - Glavel per plan
- heads-up on any thermal-break connections ie @ column bases in slab or any armatherm detail that should be on PE's radar?
- Radon - info coming from Arch
- stud spacing for interior walls is 16" o.c.
- subfloor sheathing is- 3/4" advantech
- XP20 stud spacing is 16" o.c.
- Horizontal orientation for 2x3 service cavity battens?
- single 2x4 service cavity members around openings?
- If Horizontal - Preferred vertical spacing of first, second and following service cavity members?
- What tolerance should we account for in slab - vertical and w/l? Bryan/Builder
- Any engineered wood substitution requests from factory?

BEYOND SWIPING RIGHT | DFMA – DATA GATHERING

INTRODUCTION | SCHEMATIC-DATING | DEVELOPMENT-PRENUP | DOCUMENTATION-TYING THE KNOT | QUESTIONS



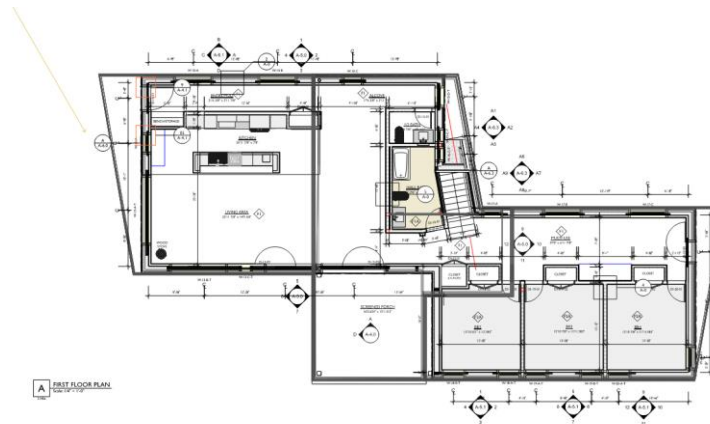
Project Setup - Data Gathering

Request latest Drawing Files:
 Architecturals
 Window Schedule / Order

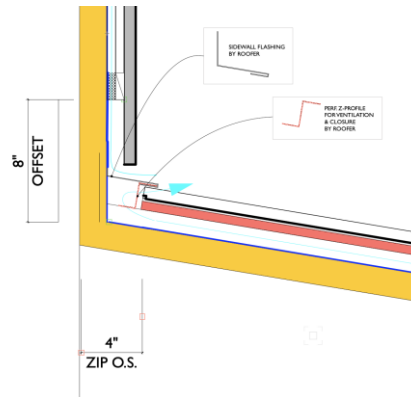
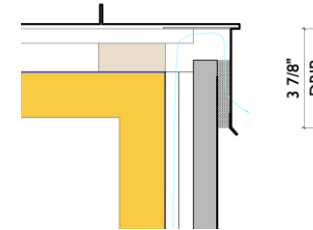
2d CAD Plans, Elevations, Sections

3d Model: IFC, Sat, Sketchup, Vectorworks, Revit, Archicad

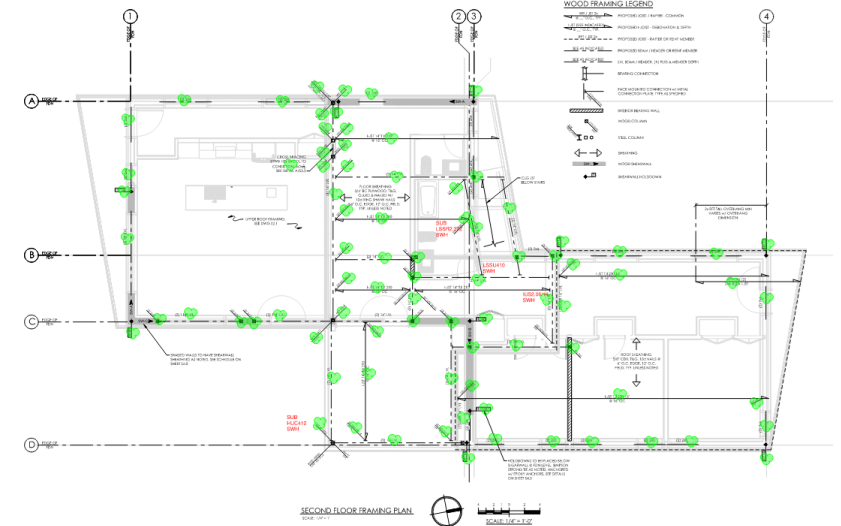
Collaborator 2d/3d Content:
 MEP progress model
 Structural Eng model
 structural steel model
 stair fabricator model



FIRST FLOOR PLAN



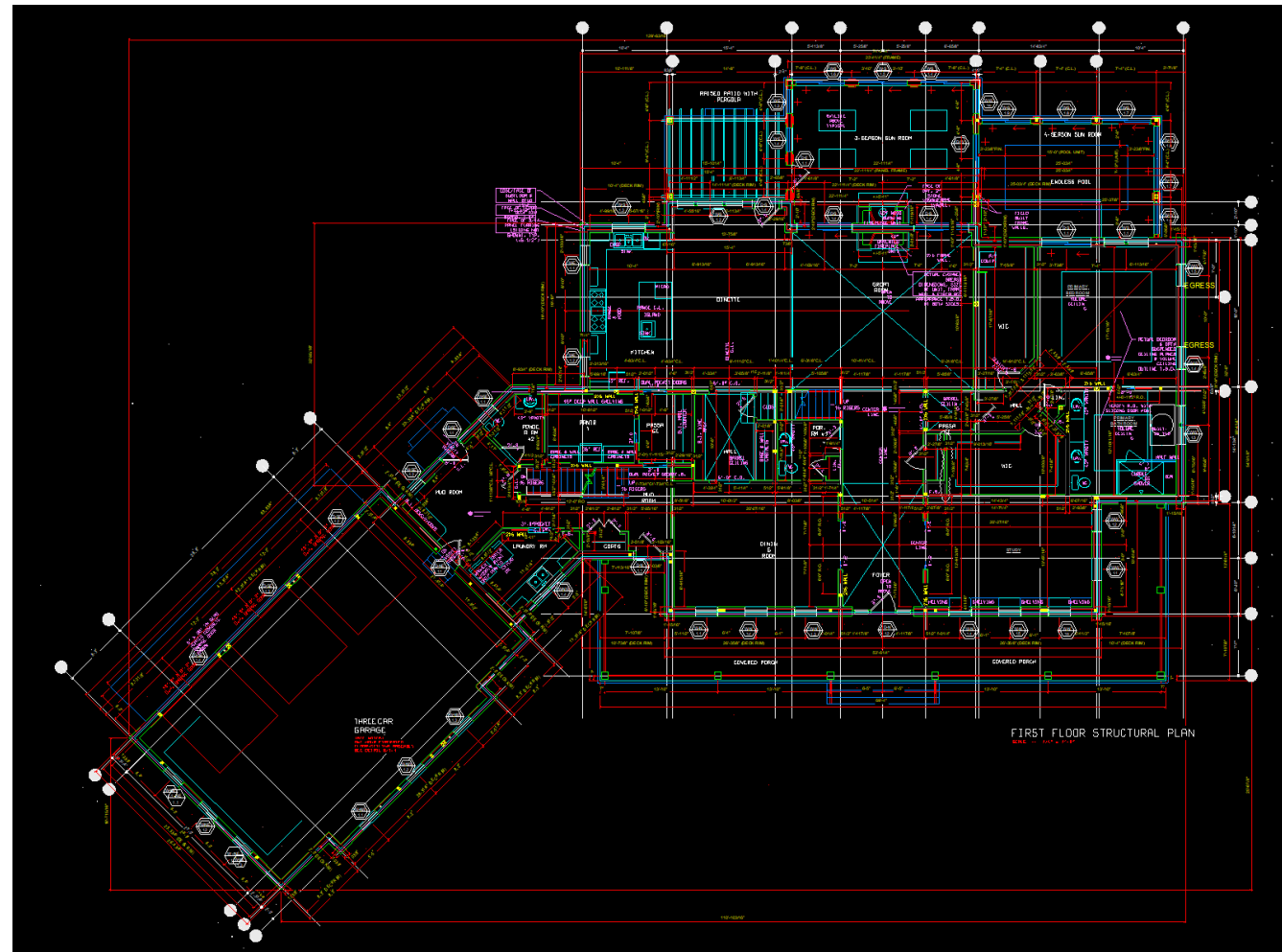
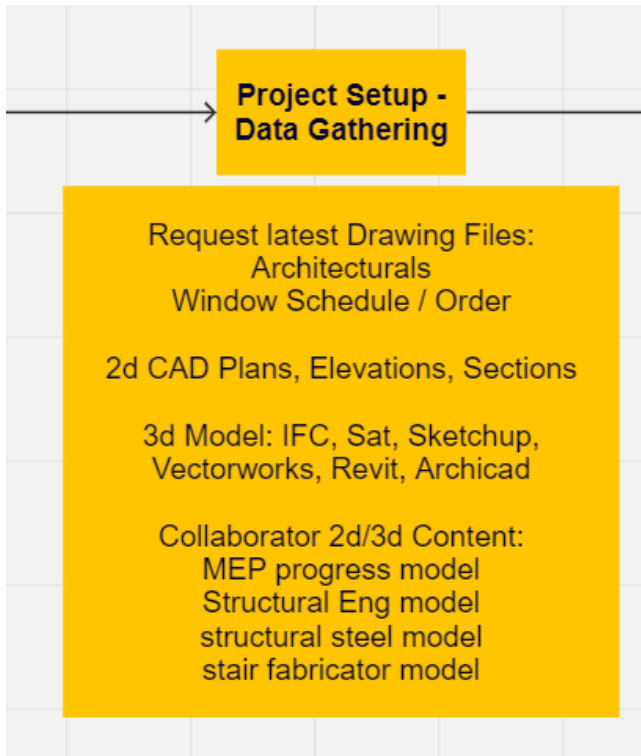
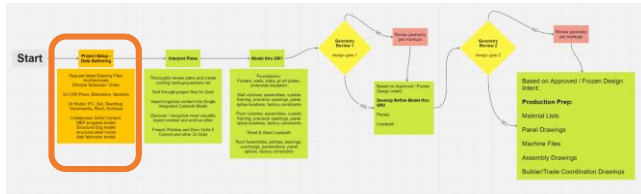
A-2.1



BEYOND SWIPING RIGHT | DFMA – DATA GATHERING

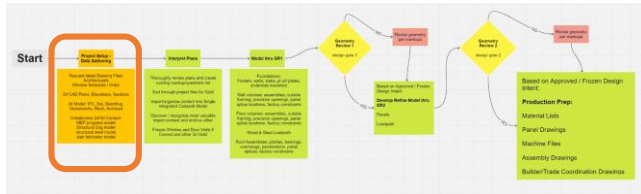
INTRODUCTION | SCHEMATIC-DATING | DEVELOPMENT-PRENUP | DOCUMENTATION-TYING THE KNOT | QUESTIONS

Exchanging design intent can be like a very cloudy conversation.



BEYOND SWIPING RIGHT | DFMA – DATA GATHERING

INTRODUCTION | SCHEMATIC-DATING | DEVELOPMENT-PREUP | DOCUMENTATION-TYING THE KNOT | QUESTIONS



A more direct approach – find common ground and make it the center of attention.

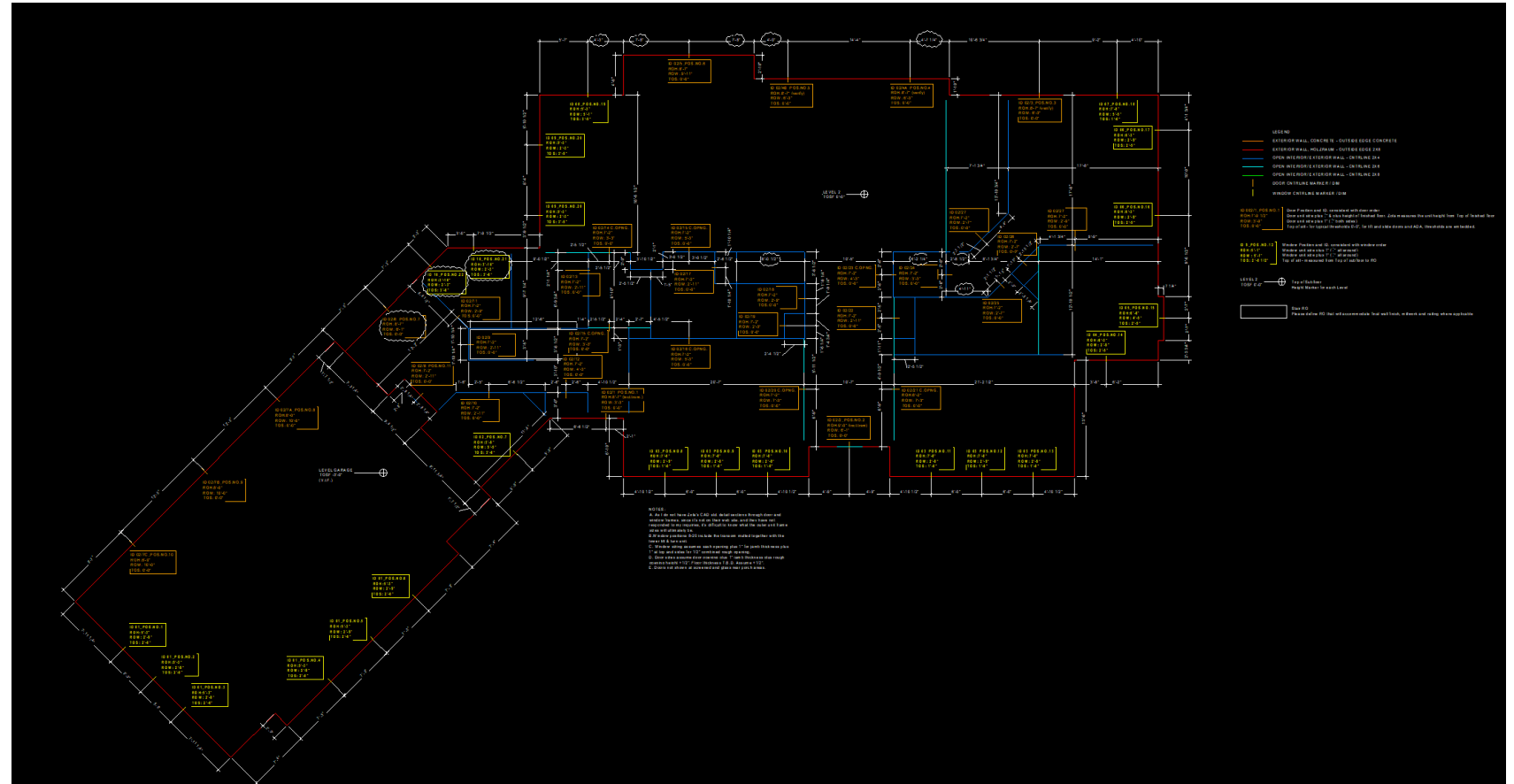
Project Setup - Data Gathering

Request latest Drawing Files:
Architecturals
Window Schedule / Order

2d CAD Plans, Elevations, Sections

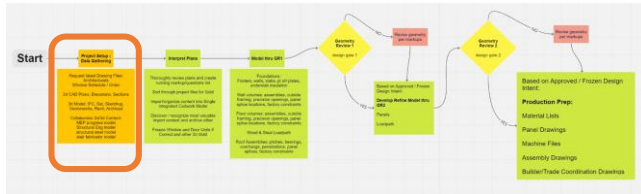
3d Model: IFC, Sat, Sketchup,
Vectorworks, Revit, Archicad

Collaborator 2d/3d Content:
MEP progress model
Structural Eng model
structural steel model
stair fabricator model



BEYOND SWIPING RIGHT | DFMA – DATA GATHERING

INTRODUCTION | SCHEMATIC-DATING | DEVELOPMENT-PREUP | DOCUMENTATION-TYING THE KNOT | QUESTIONS



Competing Agendas!

On the same page!

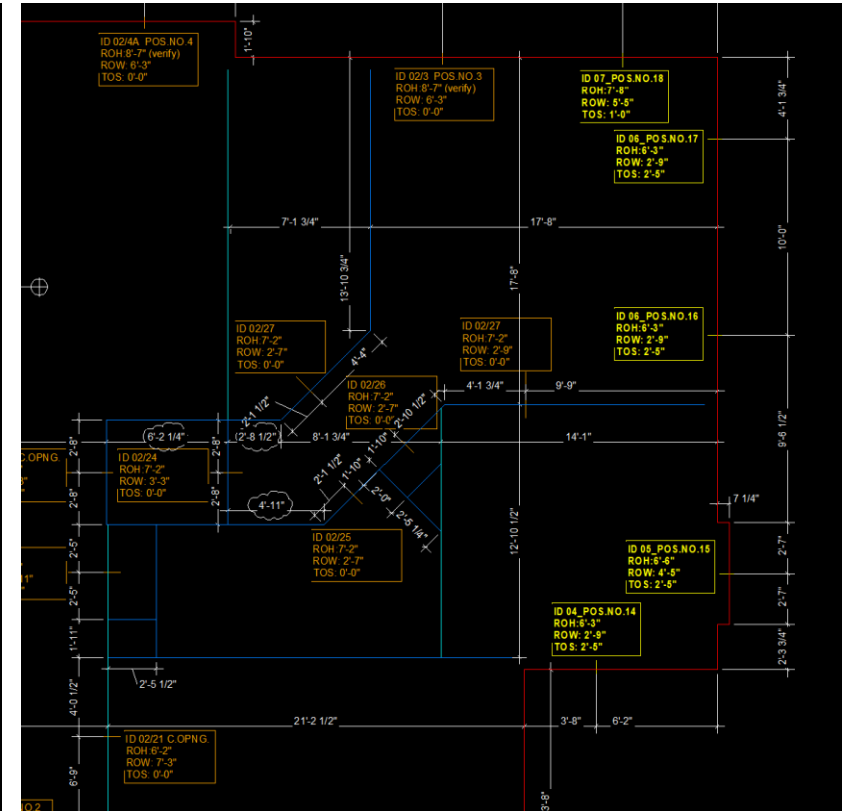
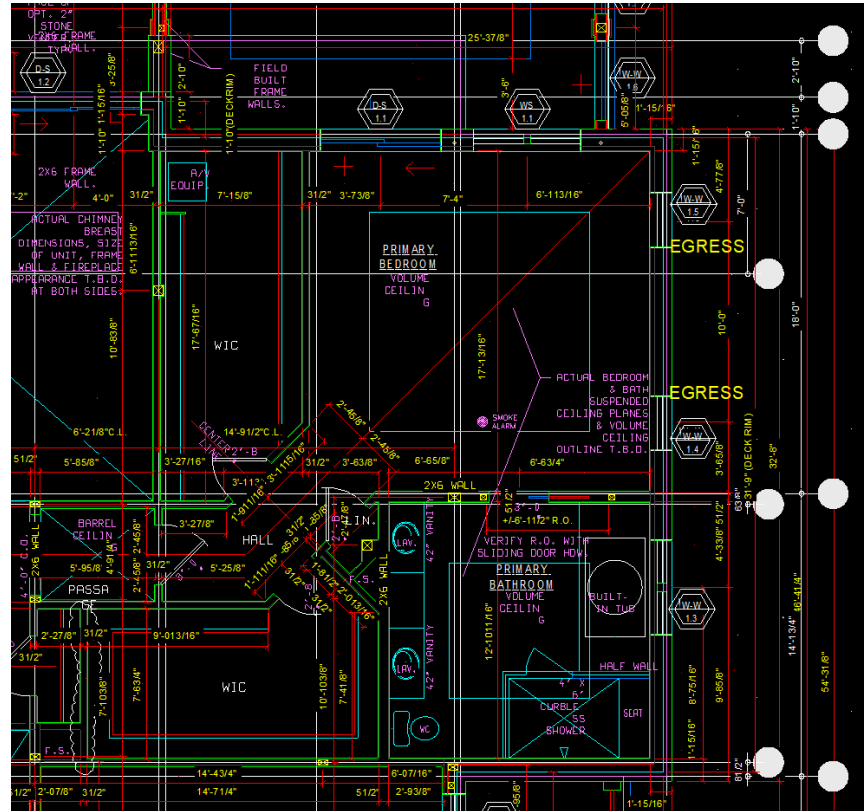
Project Setup - Data Gathering

Request latest Drawing Files:
 Architecturals
 Window Schedule / Order

2d CAD Plans, Elevations, Sections

3d Model: IFC, Sat, Sketchup, Vectorworks, Revit, Archicad

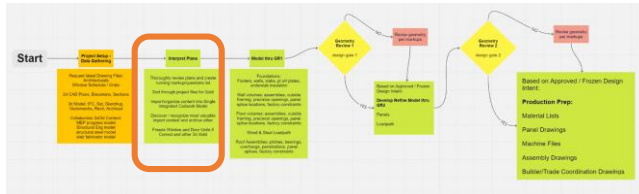
Collaborator 2d/3d Content:
 MEP progress model
 Structural Eng model
 structural steel model
 stair fabricator model



BEYOND SWIPING RIGHT | DFMA – PLAN INTERPRETATION

INTRODUCTION | SCHEMATIC-DATING | DEVELOPMENT-PRENUP | DOCUMENTATION-TYING THE KNOT | QUESTIONS

BARRY PRICE ARCHITECTURE



Interpret Plans

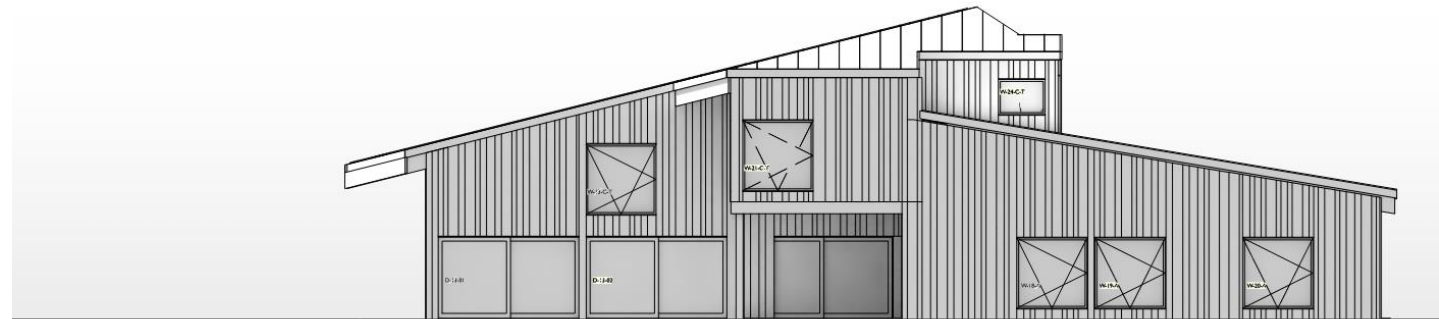
Thoroughly review plans and create running markup/questions list

Sort through project files for Gold

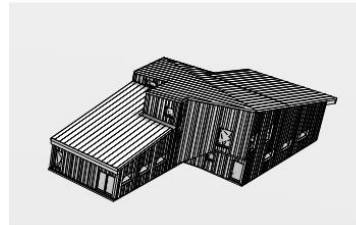
Import/organize content into Single Integrated Cadwork Model

Discover / recognize most valuable import content and archive other

Freeze Window and Door Units if Correct and other 3d Gold



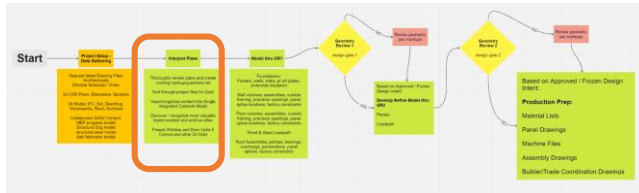
A SOUTH ELEVATION
Scale: 1/4" = 1'-0"



D EAST ELEVATION
Scale: 1/4" = 1'-0"

BEYOND SWIPING RIGHT | DFMA – PLAN INTERPRETATION

INTRODUCTION | SCHEMATIC-DATING | DEVELOPMENT-PRENUP | DOCUMENTATION-TYING THE KNOT | QUESTIONS



→ Interpret Plans

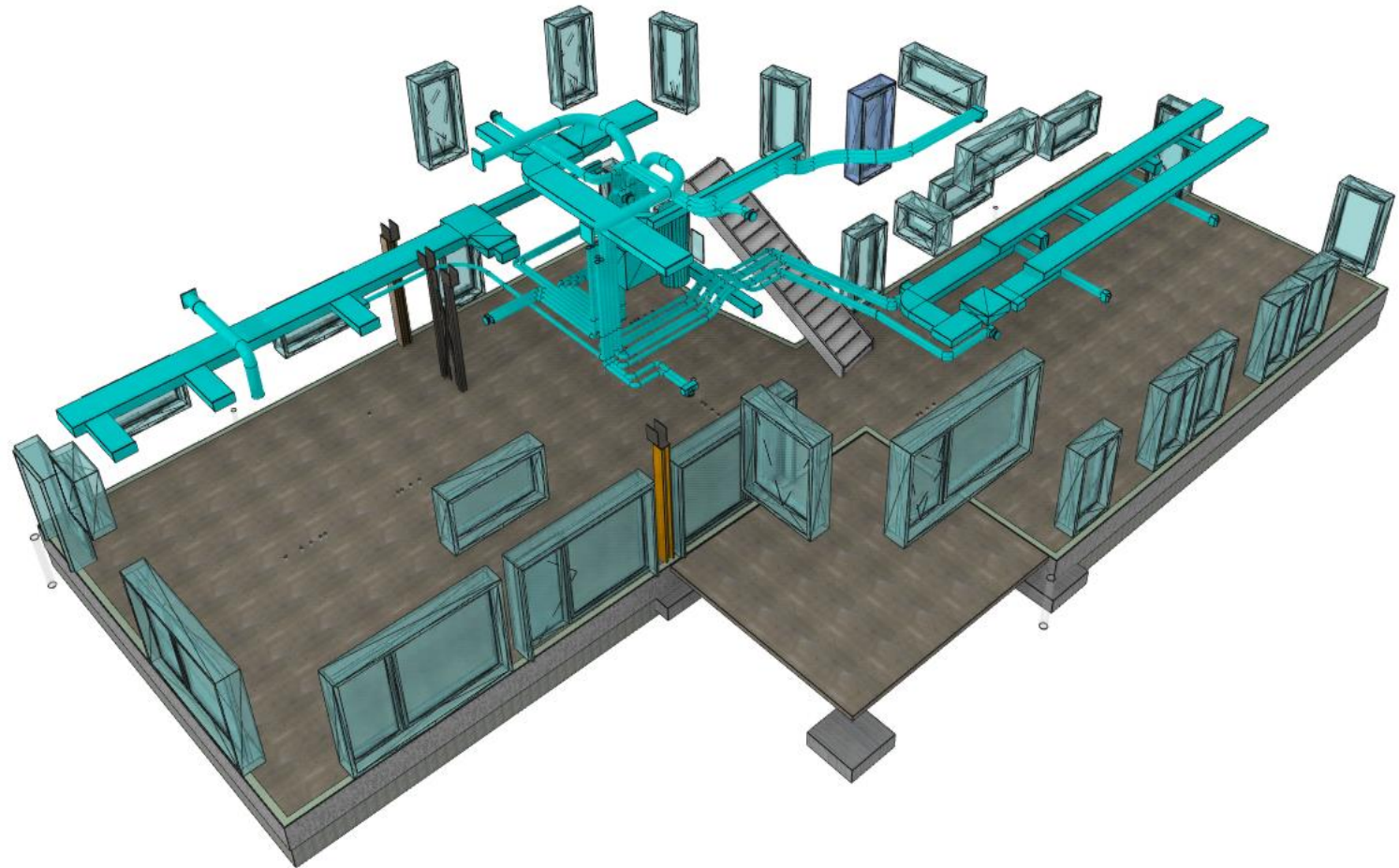
Thoroughly review plans and create running markup/questions list

Sort through project files for Gold

Import/organize content into Single Integrated Cadwork Model

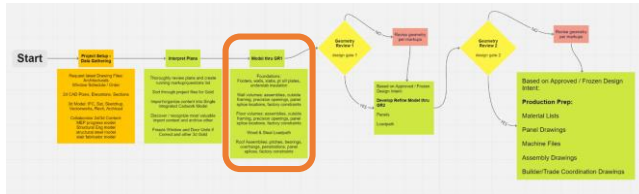
Discover / recognize most valuable import content and archive other

Freeze Window and Door Units if Correct and other 3d Gold



BEYOND SWIPING RIGHT | DFMA – MODELING TOWARDS DESIGN GATE 1

INTRODUCTION | SCHEMATIC-DATING | DEVELOPMENT-PREUP | DOCUMENTATION-TYING THE KNOT | QUESTIONS



→ Model thru GR1

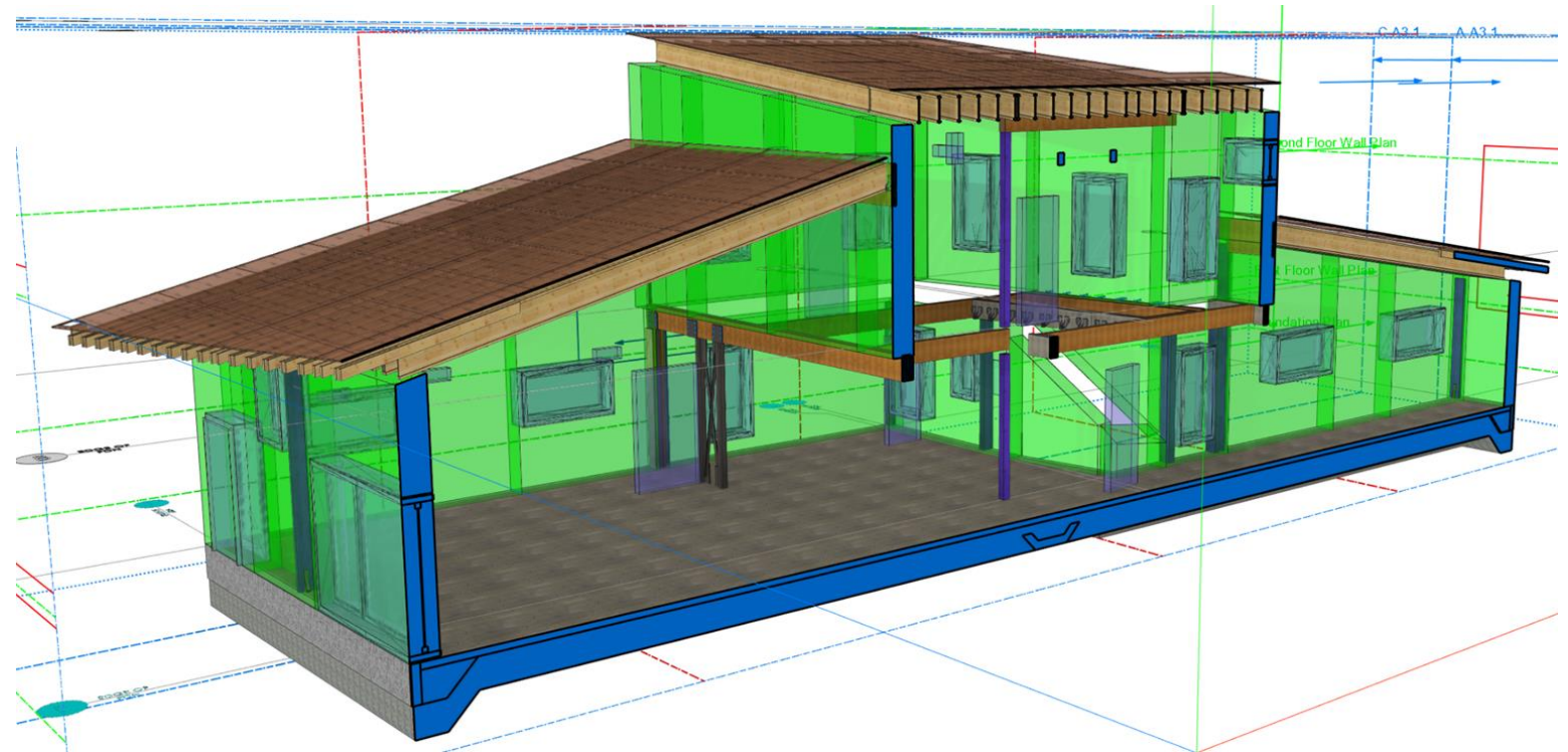
Foundations:
Footers, walls, slabs, pt sill plates,
underslab insulation

Wall volumes: assemblies, outside
framing, precision openings, panel
splice locations, factory constraints

Floor volumes: assemblies, outside
framing, precision openings, panel
splice locations, factory constraints

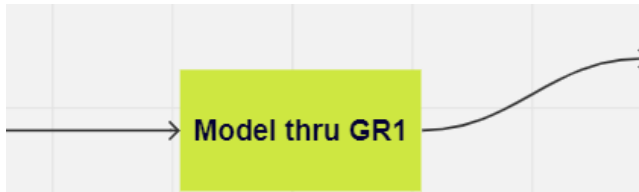
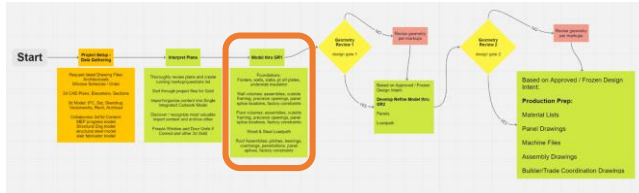
Wood & Steel Loadpath

Roof Assemblies: pitches, bearings,
overhangs, penetrations, panel
splices, factory constraints



BEYOND SWIPING RIGHT | DFMA – MODELING TOWARDS DESIGN GATE 1

INTRODUCTION | SCHEMATIC-DATING | DEVELOPMENT-PREUP | DOCUMENTATION-TYING THE KNOT | QUESTIONS



Model thru GR1

Foundations:
Footers, walls, slabs, pt sill plates,
underslab insulation

Wall volumes: assemblies, outside
framing, precision openings, panel
splice locations, factory constraints

Floor volumes: assemblies, outside
framing, precision openings, panel
splice locations, factory constraints

Wood & Steel Loadpath

Roof Assemblies: pitches, bearings,
overhangs, penetrations, panel
splices, factory constraints

GR1 SET
LOD 200

APPROVED!

SC AND NEW ENERGY SCOPE COMBINED

SC AND NEW ENERGY SCOPE COMBINED

SC AND NEW ENERGY SCOPE COMBINED

BUILDER FOUNDATION SCOPE

N.E.W. ROOF PANEL SCOPE

N.E.W. INTERIOR WALL PANEL SCOPE

N.E.W. FLOOR PANEL SCOPE + BUILDER SITE INSTALLED LOADPATH

INTERIOR WALL PANEL SCOPE

REV. 1 (Architectural) Checklist: Please verify dimensions, confirm connections and check boxes to approve.

REV. 2 (Engineering) Checklist: Please verify elevations confirm connections and check boxes to approve.

REV. 3 (Inspection) Checklist: Please verify elevations confirm connections and check boxes to approve.

Included XPS Exterior Wall Panel Build Up Note:

Included XPS Roof Panel Build Up Note:

PROJECT/SITE:
344 STOLL ROAD PARCEL 16.4-1-5 NEW YORK

DESIGNER OF RECORD:
BARRY PRICE ARCHITECTURE BEARSVILLE, NY 12409 EMAIL: INFO@BARRYPRICE.COM

ENGINEER OF RECORD:
PROPER & O'LEARY ENGINEERING, PC 1915 5TH AVE P.O. BOX 715 TROY, NY 12180

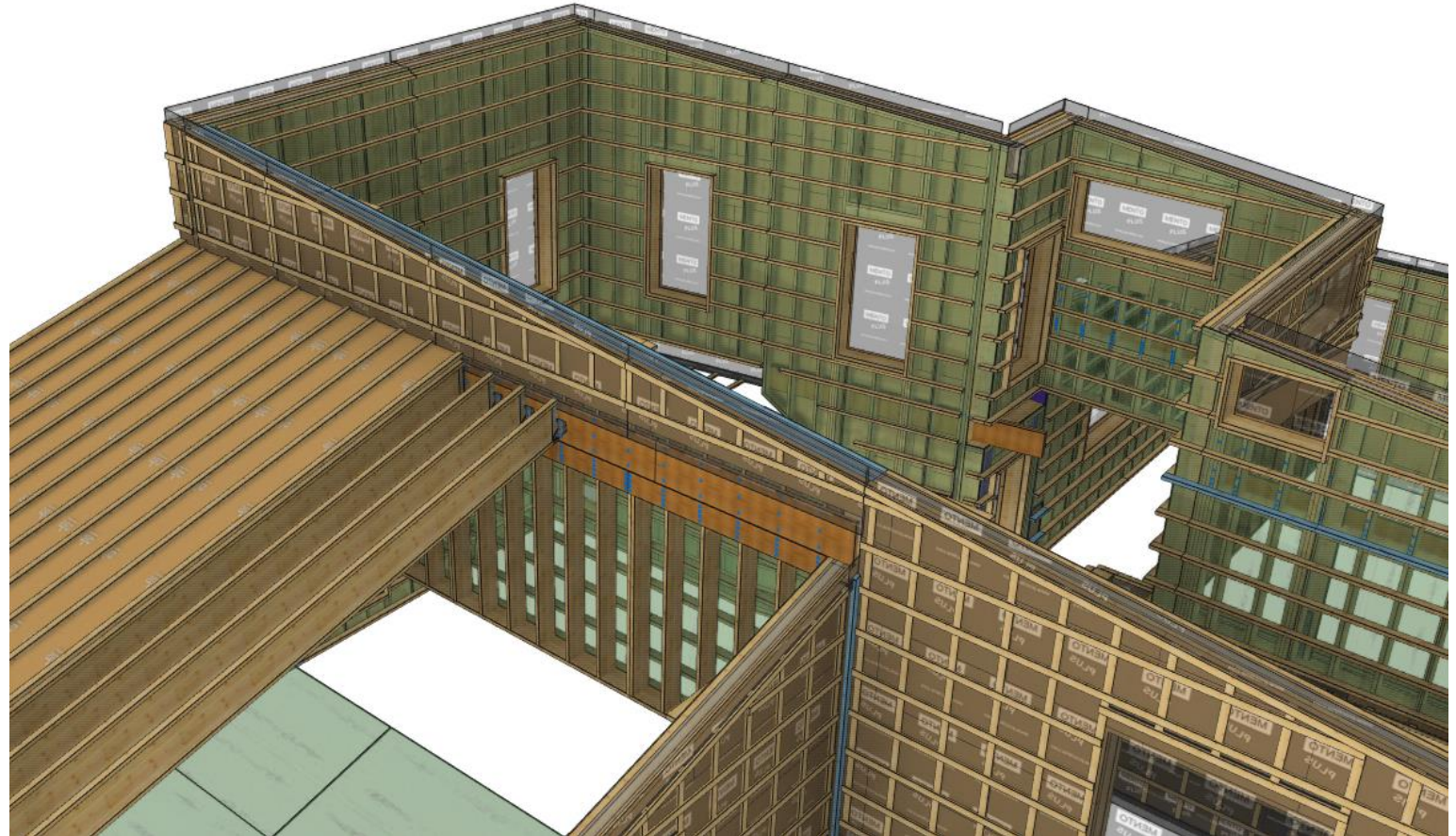
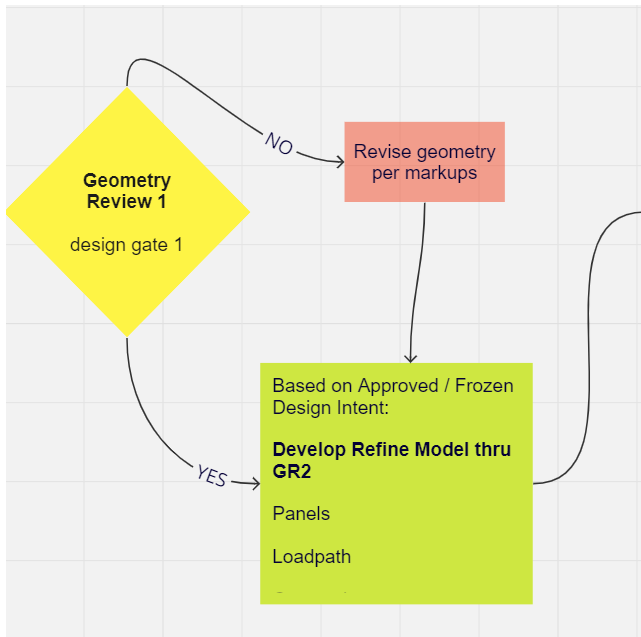
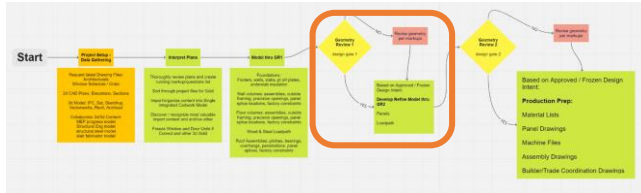
GEOMETRY REVIEW 1.1
COVER / SCOPE IMAGES
DRAWN BY: SMH

344 STOLL ROAD (PARCEL 16.4-1-5) NEW YORK
Cover / Scope Images

HOLZRAUM SYSTEM LLC
NEW ENERGY WORKS
REVIEW 1.1
GR 0.1
6/22/2023

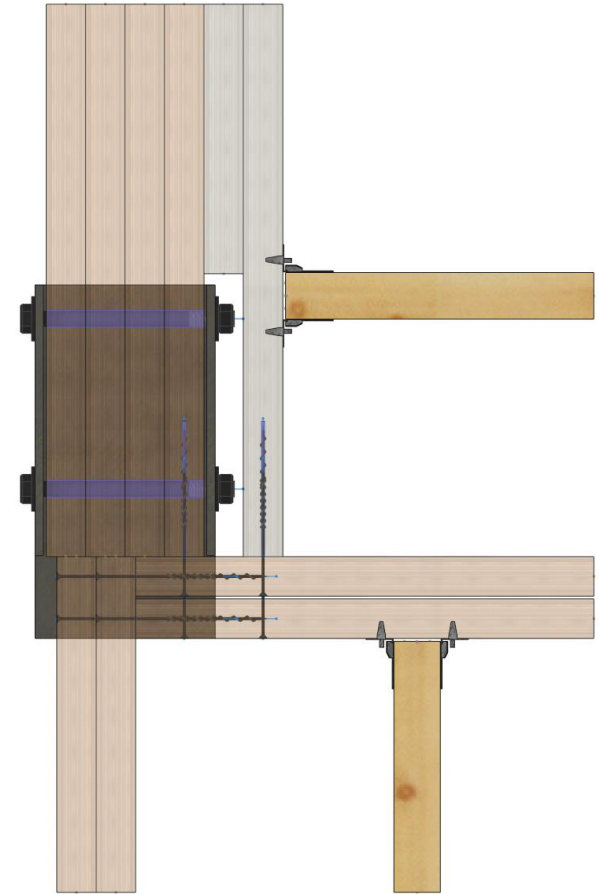
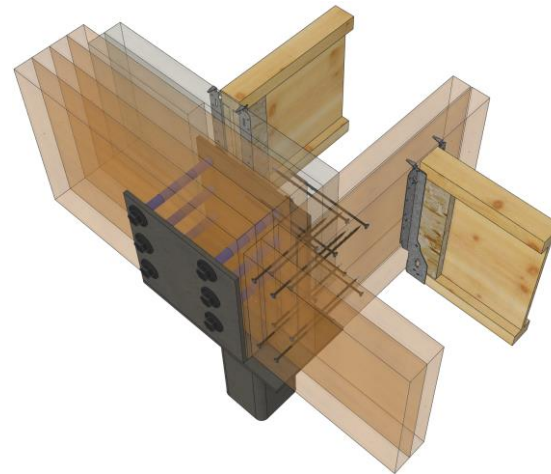
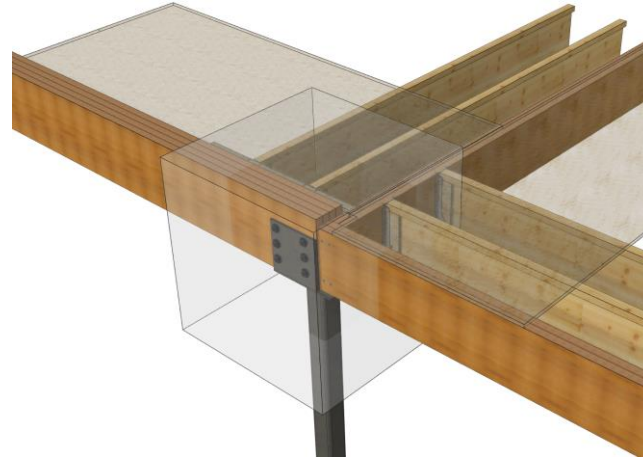
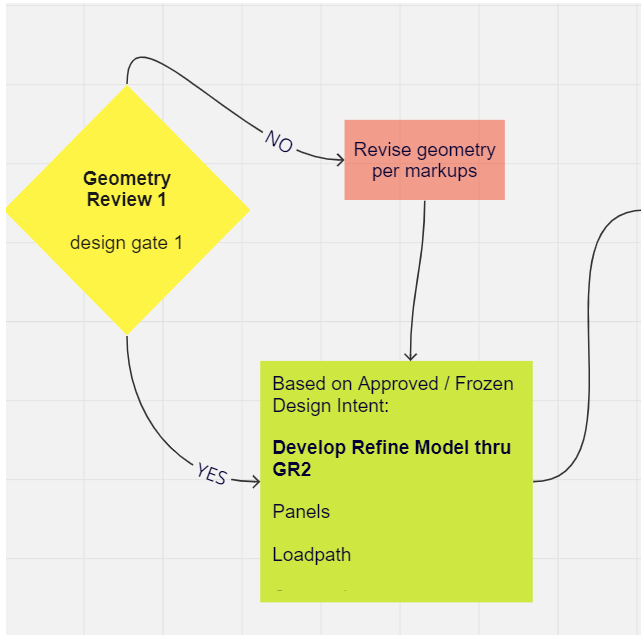
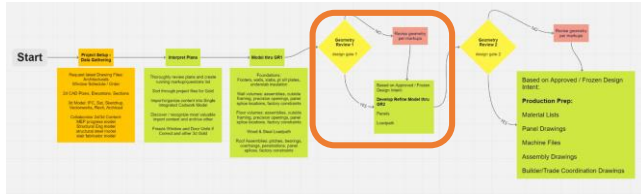
BEYOND SWIPING RIGHT | DFMA – MODELING TOWARDS DESIGN GATE 2

INTRODUCTION | SCHEMATIC-DATING | DEVELOPMENT-PREUP | DOCUMENTATION-TYING THE KNOT | QUESTIONS



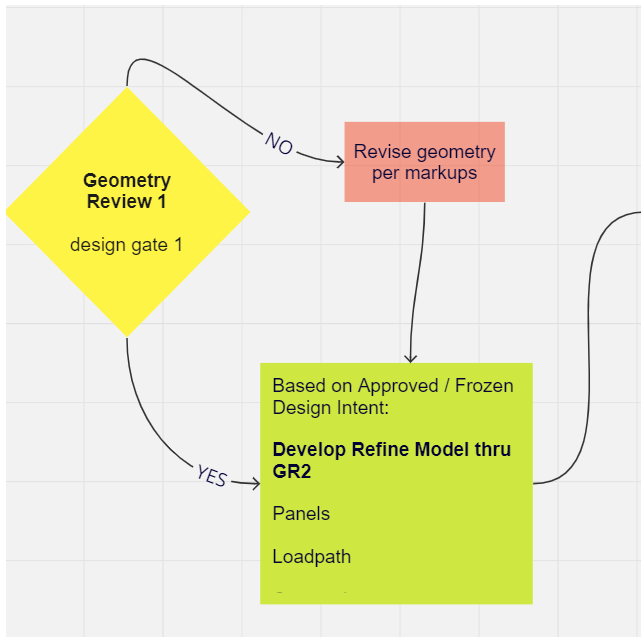
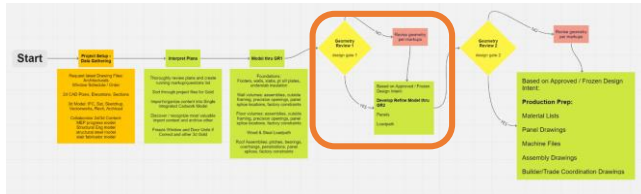
BEYOND SWIPING RIGHT | DFMA – MODELING TOWARDS DESIGN GATE 2

INTRODUCTION | SCHEMATIC-DATING | DEVELOPMENT-PREUP | DOCUMENTATION-TYING THE KNOT | QUESTIONS



BEYOND SWIPING RIGHT | DFMA – MODELING TOWARDS DESIGN GATE 2

INTRODUCTION | SCHEMATIC-DATING | DEVELOPMENT-PRENUP | DOCUMENTATION-TYING THE KNOT | QUESTIONS



waiting for Melissa to get back to me on this after I speak to you about this wall

a.

4. Does this beam connection between F4 and F7 require a hanger or other hardware?

2ply is supported by a studpack in exterior wall below - Melissa can you confirm?

a.

5. Do these joists in F4 need to get interrupted? Why not let them run all the way through? Push that rim piece they're currently landing on out alongside the double-lvl in F7?

Because there are many layers and part relationships it makes this a lot of work. I can make the change to 1/4" at roof panel splices but would prefer to do this after GR2 is out.

Roof

- Hypothetically, how much work is it to change our panel gap in the roof from 1/8" to 1/4"? With the Bardin roof panels coming in real tight, and knowing that these panels are even thicker (and some much longer) we're tossing around the idea of giving ourselves a little more room to work.
- ER4 – we need a concealed hanger for this edge of panel, or a doubled-up ledger that the rafters can bear on so that hangers are no longer needed?

check hanger selector for alt

looking for HUC316 with slope per Melissa. don't see it on simpson page

a.

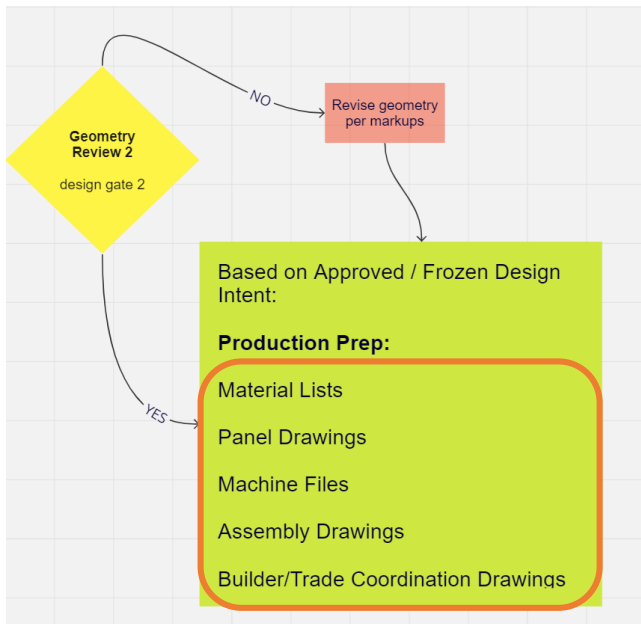
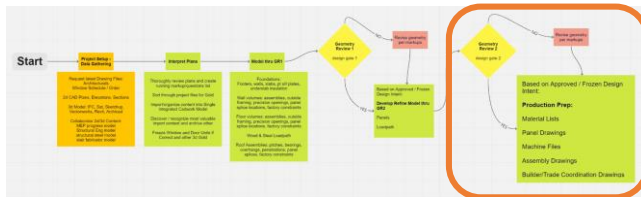
- Shouldn't the roof sheathings get held back on the right to match what you did on the left? Also needs adjusted on the West roof.

a.

- Originally as a group we discussed using TJI's for roof edges however I thought after that we discussed changing the roof perimeter members to LSL so we don't have to worry about insulating that web

BEYOND SWIPING RIGHT | DFMA – CLIENT APPROVAL

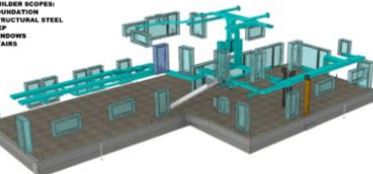
INTRODUCTION | SCHEMATIC-DATING | DEVELOPMENT-PRENUP | DOCUMENTATION-TYING THE KNOT | QUESTIONS



APPROVED!

GR2 SET
LOD 350/400

NOTE: ELEMENTS OUTSIDE OF FACTORY SCOPE ARE THE RESPONSIBILITY OF THE BUILDER AND ARCHITECT TO VERIFY AND SUPPLY. ALL NON-FACTORY SCOPE GEOMETRY IS SHOWN TO AID IN THE REVIEW AND APPROVAL OF NEW ENERGY WORKS SCOPE ITEMS. BUILDER & ARCHITECT TO NOTIFY NEW ENERGY WORKS OF ANY DISCREPANCIES BEFORE PROCEEDING WITH INSTALLATION OF NON-FACTORY SCOPE ITEMS. HOLZHAUM SYSTEM BEARS NO RESPONSIBILITY FOR SUCH DISCREPANCIES.



REV_1 (Structural) Checklist: Please verify dimensions, confirm correctness and check boxes to approve.

Building dimensions, including interior wall dimensions and building elevations.

Use to verify:

- Panel geometry of scope items provided by Function/Builder/Architect
- Panel geometry of scope items provided by Function/Builder/Architect
- Panel geometry of scope items provided by Function/Builder/Architect
- Panel geometry of scope items provided by Function/Builder/Architect
- Panel geometry of scope items provided by Function/Builder/Architect

Approved by: _____

(Date): DATE _____

(Checklist): DATE _____

DATE _____

DATE _____

REV_2 (Engineering) Checklist: Please verify dimensions confirm correctness and check boxes to approve.

Production floor plans, elevations, interior wall panels, and roof panels.

Panel geometry of scope items provided by Function/Builder/Architect

Panel geometry of scope items provided by Function/Builder/Architect

Panel geometry of scope items provided by Function/Builder/Architect

Panel geometry of scope items provided by Function/Builder/Architect

Panel geometry of scope items provided by Function/Builder/Architect

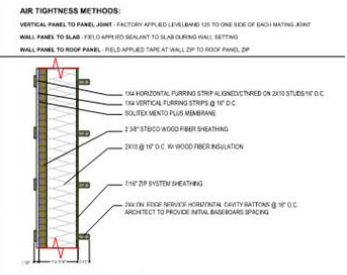
Approved by: _____

(Date): DATE _____

(Checklist): DATE _____

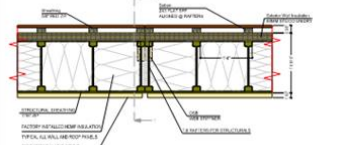
DATE _____

DATE _____



Insulated XFD Exterior Wall Panel Build Up Notes:

- 2x10" SIP SYSTEM SHEATHING @ 16" O.C.
- 2x6" FRG EXPOSED HORIZONTAL CAVITY BATTENS @ 16" O.C. ARCHITECT TO PROVIDE RETAIL BARRIERS SPACING
- 2x8" STEEL WOOD FIBER SHEATHING
- 2x10" @ 16" O.C. R15 WOOD FIBER INSULATION
- 2x10" SIP SYSTEM SHEATHING
- 2x6" FRG EXPOSED HORIZONTAL CAVITY BATTENS @ 16" O.C. ARCHITECT TO PROVIDE RETAIL BARRIERS SPACING



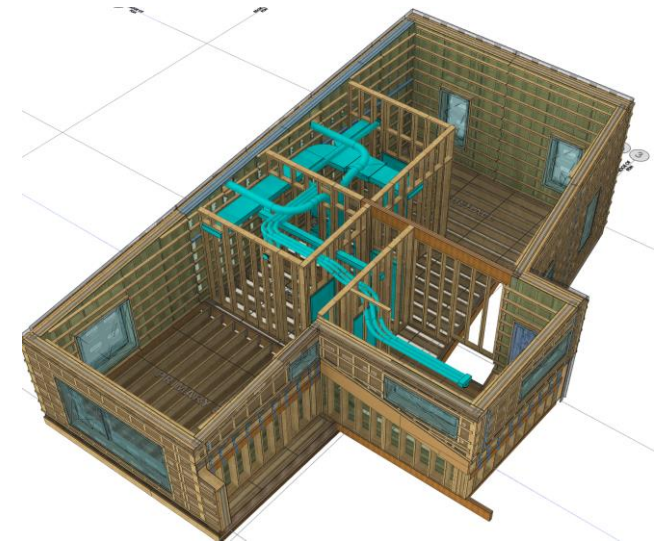
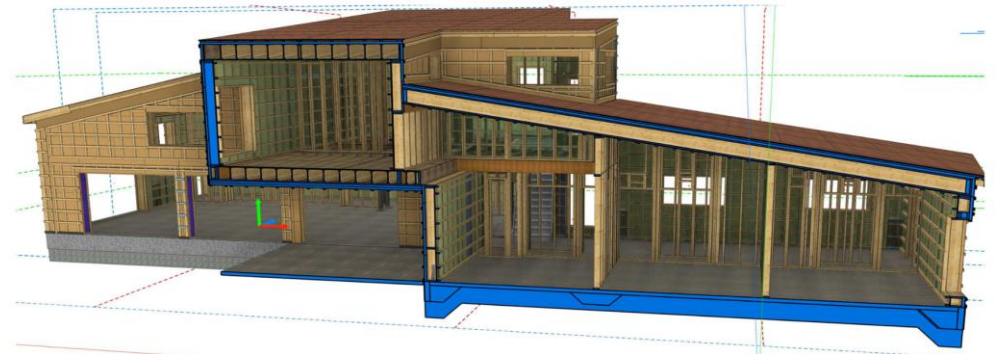
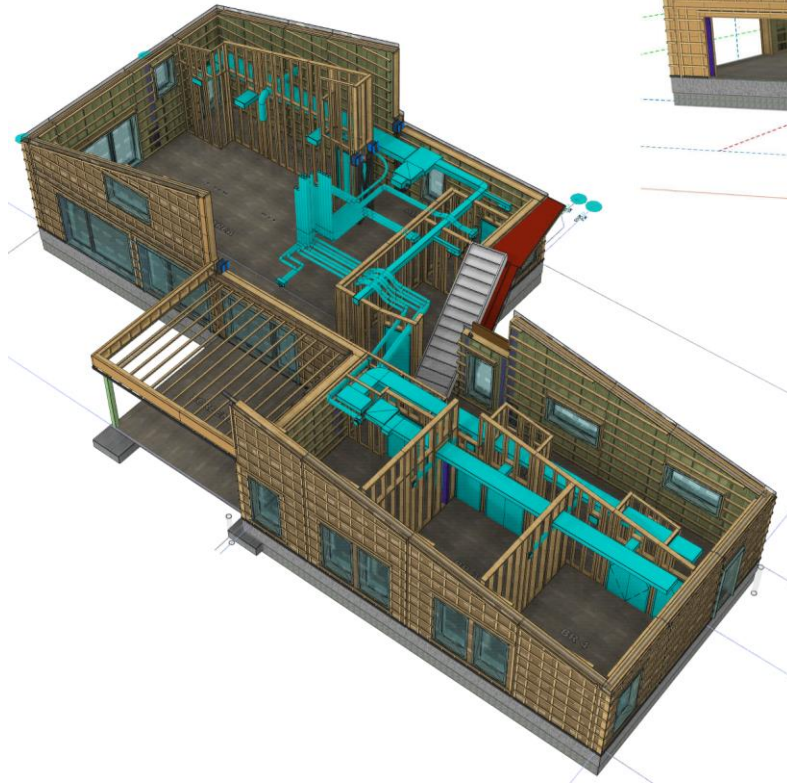
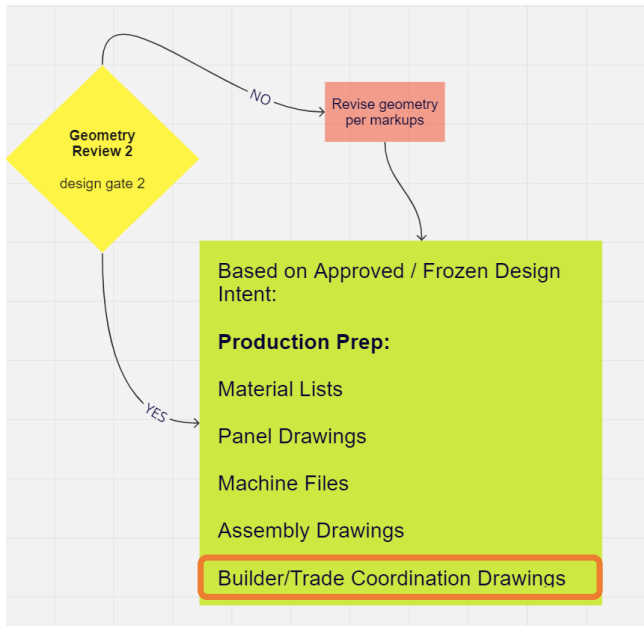
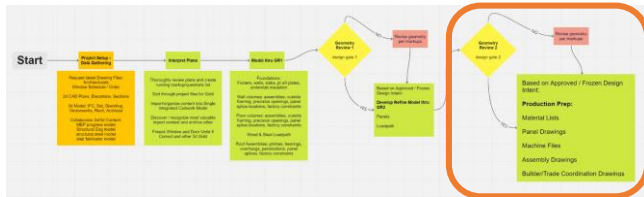
Insulated XFD Roof Panel Build Up Notes:

- 2x10" SIP SYSTEM SHEATHING @ 16" O.C.
- 2x6" FRG EXPOSED HORIZONTAL CAVITY BATTENS @ 16" O.C. ARCHITECT TO PROVIDE RETAIL BARRIERS SPACING
- 2x8" STEEL WOOD FIBER SHEATHING
- 2x10" @ 16" O.C. R15 WOOD FIBER INSULATION
- 2x10" SIP SYSTEM SHEATHING
- 2x6" FRG EXPOSED HORIZONTAL CAVITY BATTENS @ 16" O.C. ARCHITECT TO PROVIDE RETAIL BARRIERS SPACING

NOTE: STEEL FABRICATION, DELIVERY AND INSTALLATION BY BUILDER.

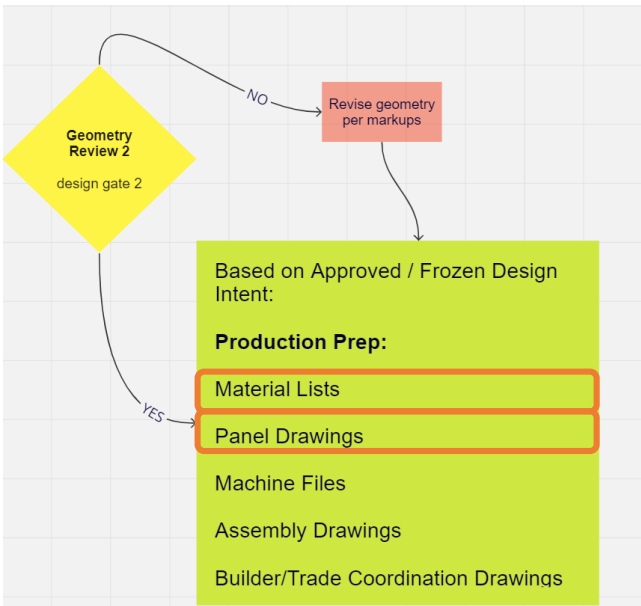
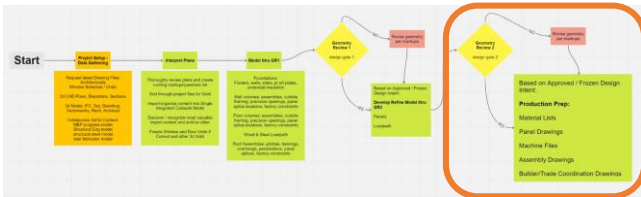
BEYOND SWIPING RIGHT | PRODUCTION OUTPUTS

INTRODUCTION | SCHEMATIC-DATING | DEVELOPMENT-PREUP | DOCUMENTATION-TYING THE KNOT | QUESTIONS



BEYOND SWIPING RIGHT | PRODUCTION OUTPUTS

INTRODUCTION | SCHEMATIC-DATING | DEVELOPMENT-PRENUP | DOCUMENTATION-TYING THE KNOT | QUESTIONS



EXTERIOR WALL NOTES:

- INSIDE SERVICE CAVITY ZIP ON EDGE HORIZONTAL @ 24" O.C.
- 7/16" THK GREEN ZIP SHEATHING TIGHT TO FRAMING WITH NO NAILS
- 6" OC @ EDGES (END)
- 12" OC @ FIELD (END)
- ZIP SHEATHING JOINTS WITHIN WALL PANEL TAPED PER AIR SEALING DTL
- 2 x 8 FRAMED WALLS WITH FACTORY INSTALLED HEMP INSULATION
- 2 3/8" (60PM) THK STEED UNIVERSAL DRY WOOD FIBER INSULATION
- HEMP FLS MEMBRANE APPLIED - LONG AT TOP AND BOTTOM PER DRAWINGS
- INTELLO LEAKERS AND LEVEL BAND TO BRIDGE AIR BARRIER BTWN PANELS

MENTO -----

INTELLO - - - - -

PROJECT NAME: House SIMM - Production
 PROJECT NUMBER: 0000
 DRAWING BY: SWH
 DATE: 31-07-2023
 TITLE: EXTERIOR WALL
 HEIGHT: 24'-0"
 LENGTH: 28'-0"

1 - Structure

No. PL	Name	Material	Quantity	Real width	Real height	Real Length
4556	Stud	CDX Plywood	1	1 1/2"	7 1/4"	1'-1 7/8"
4557	Level Band 125	LEVEL BAND 125	1	4 15/16"	7/16"	1'-9 11/16"
4558	Level Band 125	LEVEL BAND 125	1	4 15/16"	7/16"	2'-7 5/16"
4559	Level Band 125	LEVEL BAND 125	1	4 15/16"	7/16"	7'-2 1/4"
4560	Level Band 125	LEVEL BAND 125	1	4 15/16"	7/16"	6'-4 1/4"
4561	Level Band 125	LEVEL BAND 125	1	4 15/16"	7/16"	11'-11 1/8"
4562	Plate	SPF	1	1 1/2"	7 1/4"	6 3/16"
4569	Plate	SPF	1	1 1/2"	7 1/4"	9 1/8"
4571	Stud	SPF	1	1 1/2"	7 1/4"	11 1/8"
4572	Stud	SPF	1	1 1/2"	7 1/4"	11 1/8"
4573	Stud	SPF	2	1 1/2"	7 1/4"	1'-1 7/8"
4574	Stud	SPF	1	1 1/2"	7 1/4"	1'-4 3/4"
4575	Stud	SPF	1	1 1/2"	7 1/4"	1'-4 15/16"
4576	Stud	SPF	1	1 1/2"	7 1/4"	1'-9 3/4"
4577	Stud	SPF	1	1 1/2"	7 1/4"	1'-9 3/4"
4578	Stud	SPF	3	1 1/2"	7 1/4"	2'-1 7/8"
4579	Plate	SPF	1	1 1/2"	7 1/4"	2'-4 1/8"
4580	Plate	SPF	1	1 1/2"	7 1/4"	2'-5"
4581	Plate	SPF	1	1 1/2"	7 1/4"	2'-6 9/16"
4583	Plate	SPF	1	1 1/2"	7 1/4"	2'-7 5/16"
4584	Stud	SPF	1	1 1/2"	7 1/4"	2'-8 5/8"
4585	Stud	SPF	1	1 1/2"	7 1/4"	3'-0 3/4"
4586	Lintel	SPF	1	1 1/2"	7 1/4"	3'-3 7/8"
4588	Stud	SPF	1	1 1/2"	7 1/4"	4'-8 3/16"
4589	Stud	SPF	1	1 1/2"	7 1/4"	4'-8 3/4"
4591	Stud, Trimmer	SPF	5	1 1/2"	7 1/4"	5'-11 1/8"
4592	Stud	SPF	1	1 1/2"	7 1/4"	6'-2 11/16"
4593	Stud	SPF	1	1 1/2"	7 1/4"	6'-4 3/16"
4594	Trimmer	SPF	1	1 1/2"	7 1/4"	6'-5 7/8"
4595	Trimmer	SPF	1	1 1/2"	7 1/4"	6'-7 1/8"
4597	Stud	SPF	1	1 1/2"	7 1/4"	6'-9 1/4"
4599	Plate	SPF	1	1 1/2"	7 1/4"	9'-11 7/16"
4600	Plate	SPF	1	1 1/2"	7 1/4"	9'-11 11/16"
4601	VTP	SPF	1	1 1/2"	7 1/4"	10'-0 15/16"
4604	VTP	SPF	1	1 1/2"	7 1/4"	12'-9 1/2"
4605	Sill	SPF	1	1 1/2"	9 1/4"	15'-11 1/8"
4607	Header	SPF	2	1 1/2"	9 1/4"	3'-3 7/8"
4608	Header	SPF	1	1 1/2"	9 1/4"	3'-3 7/8"

Total panel weight excluding hemp: 891.894 lb

STRUCTURE FROM OPPOSITE SIDE

Legend:

- Centre of gravity
- Panel reference point
- X To define
- X To define
- X To define

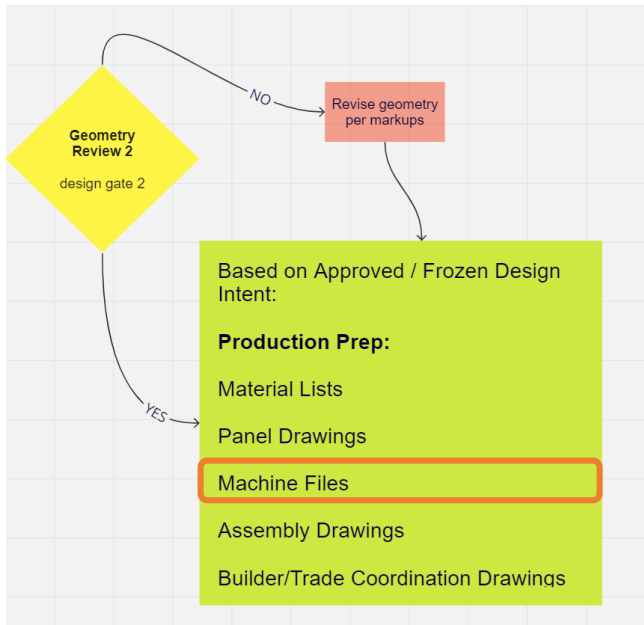
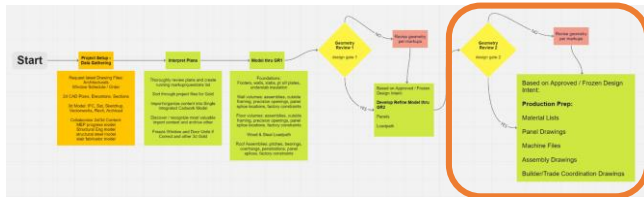
Group: UW-6
Subgroup: Exterior Wall Slice

Project: House SIMM - Production
 Client: Job #: Designer: SWH Scale:

Revision: Printed: 31-07-2023
 Sheet:

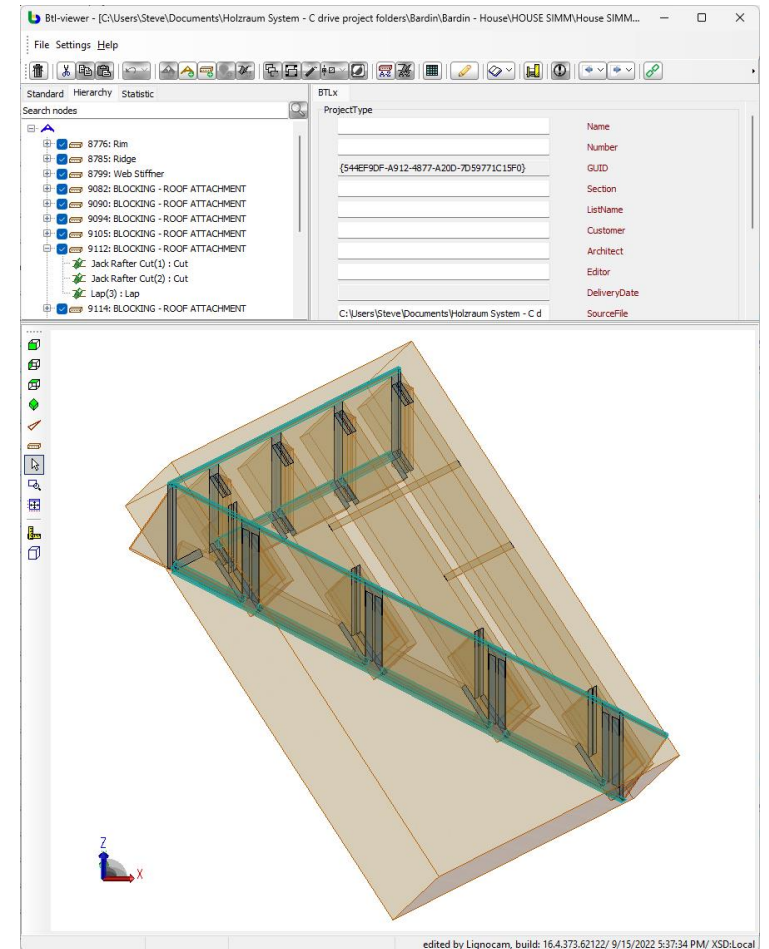
BEYOND SWIPING RIGHT | PRODUCTION OUTPUTS

INTRODUCTION | SCHEMATIC-DATING | DEVELOPMENT-PREUP | DOCUMENTATION-TYING THE KNOT | QUESTIONS



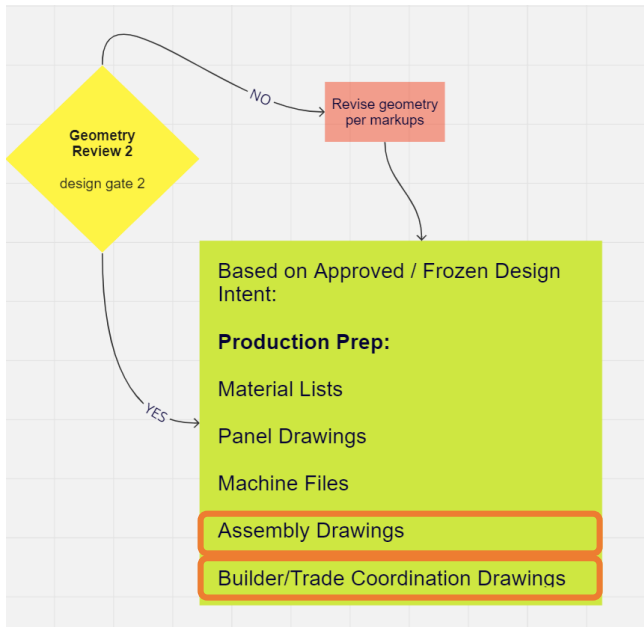
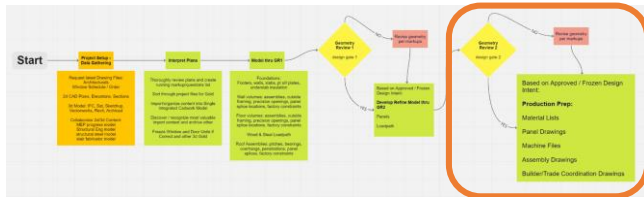
```

<Transformations>
<Transformation GUID="{EFB19685-4214-4E40-ADA4-AE7E9118A1AB}">
  <Position>
    <ReferencePoint Y="-30924.356932" Z="6761.298668" X="-10285.703175"/>
    <XVector Y="0" Z="-0.507673" X="0.86155"/>
    <YVector Y="0" Z="0.86155" X="0.507673"/>
  </Position>
</Transformation>
</Transformations>
<Colour Blue="0" Red="126" Green="65" Transparency="100"/>
<ReferenceSide Align="no" Side="2"/>
<UserReferencePlanes>
<UserReferencePlane ID="105">
  <Position>
    <ReferencePoint Y="0" Z="0" X="0"/>
    <XVector Y="0" Z="1" X="0"/>
    <YVector Y="1" Z="0" X="0"/>
  </Position>
</UserReferencePlane>
<UserReferencePlane ID="106">
  <Position>
    <ReferencePoint Y="406.860154" Z="0" X="2672.947673"/>
    <XVector Y="0" Z="1" X="0"/>
    <YVector Y="-1" Z="0" X="0"/>
  </Position>
</UserReferencePlane>
</UserReferencePlanes>
<Processings>
<JackRafterCut ProcessingQuality="automatic" Process="yes" Name="Cut" ReferencePlaneID="2" ProcessID="1">
  <Orientation>end</Orientation>
  <StartX>2414.776826</StartX>
  <StartY>0</StartY>
  <StartDepth>0</StartDepth>
  <Angle>120.508969</Angle>
  <Inclination>135.000008</Inclination>
</JackRafterCut>
<JackRafterCut ProcessingQuality="automatic" Process="yes" Name="Cut" ReferencePlaneID="2" ProcessID="2">
  <Orientation>start</Orientation>
  <StartX>13.677899</StartX>
  <StartY>0</StartY>
  <StartDepth>0</StartDepth>
  <Angle>59.491031</Angle>
  <Inclination>134.999992</Inclination>
</JackRafterCut>
<Lap ProcessingQuality="automatic" Process="yes" Name="Lap" ReferencePlaneID="3" ProcessID="3">
  <Orientation>start</Orientation>
  <StartX>0</StartX>
  <StartY>0</StartY>
  <Angle>90</Angle>
  <Inclination>90</Inclination>
  <Slope>-26.915675</Slope>
  <Length>2672.947673</Length>
  <Width>15.875</Width>
  <Depth>8.059309</Depth>
  <LeadAngleParallel>yes</LeadAngleParallel>
  <LeadInclinationParallel>yes</LeadInclinationParallel>
  <MachiningLimits FacelimitedEnd="no" FacelimitedFront="no" FacelimitedBack="no" FacelimitedStart="no"/>
</Lap>
<Lap ProcessingQuality="automatic" Process="yes" Name="Lap" ReferencePlaneID="1" ProcessID="4">
  <Orientation>start</Orientation>
  <StartX>245.869538</StartX>
  <StartY>0</StartY>
  <Angle>55.590294</Angle>
  
```

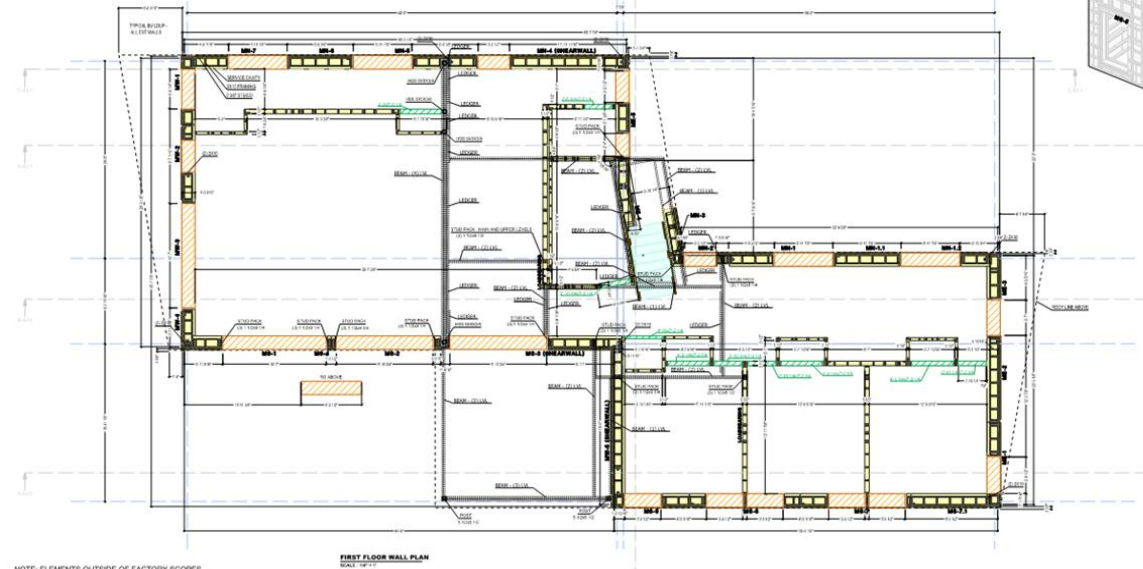
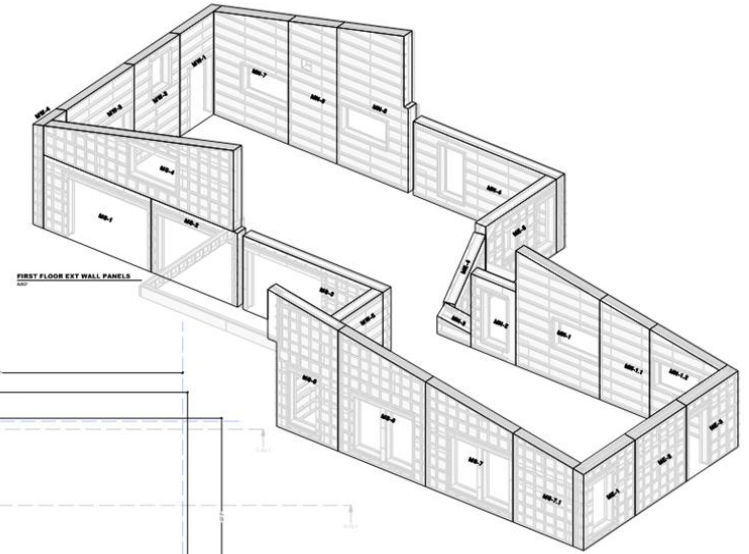
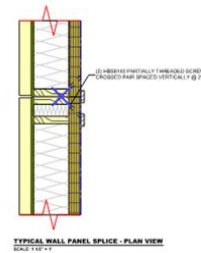
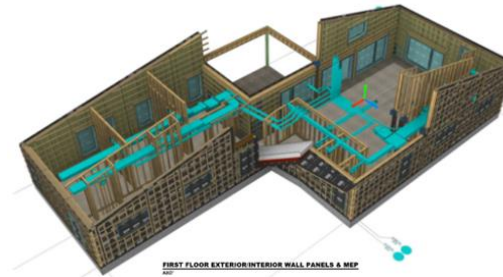


BEYOND SWIPING RIGHT | PRODUCTION OUTPUTS

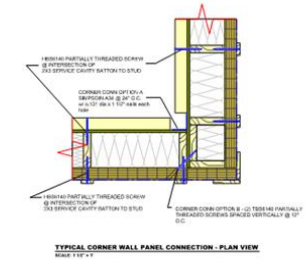
INTRODUCTION | SCHEMATIC-DATING | DEVELOPMENT-PREUP | DOCUMENTATION-TYING THE KNOT | QUESTIONS



NOTE: THE REFLECTED WALL PANELS DO NOT DISPLAY PRECISION HERE. ALL WORK IS TO BE DONE PER THE DESIGNER'S INTENT.



NOTE: ELEMENTS OUTSIDE OF FACTORY SCOPES ARE THE RESPONSIBILITY OF THE BUILDER AND ARCHITECT TO VERIFY AND SUPPLY. ALL NON-FACTORY SCOPE GEOMETRY IS SHOWN TO AID IN THE REVIEW AND APPROVAL OF NEW ENERGY WORKS SCOPE ITEMS. BUILDER & ARCHITECT TO NOTIFY NEW ENERGY WORKS OF ANY DISCREPANCIES BEFORE PROCEEDING WITH INSTALLATION OF NON-FACTORY SCOPE ITEMS. HOLD-TAIN SYSTEM BEARS NO RESPONSIBILITY FOR SUCH DISCREPANCIES.



BEYOND SWIPING RIGHT | MAKING MATCHES THAT LAST

INTRODUCTION | SCHEMATIC-DATING | DEVELOPMENT-PRENUP | DOCUMENTATION-TYING THE KNOT | QUESTIONS



Ilka Cassidy

Holzraum System
C2 Architecture
Passive House Accelerator

ilka@holzraumsystem.com
icassidy@c2-architecture.com



Shannon Pendleton

Sanderson Sustainable Design
Passive House Accelerator
Source 2050

Shannon@SandersonDesign.net
Shannon@Source2050.com



Steve Hessler

Holzraum System

steve@holzraumsystem.com